

Recombinant Full Length Human CBX1 Protein, C-Flag-tagged

Cat. No. CBX1-1726HFL Lot. No. (See product label)

SPECIFICATION

Product Overview	Recombinant Full Length Human CBX1 Protein, fused to Flag-tag at C-terminus, was expressed in Mammalian cells.
Species	Human
Source	Mammalian Cells
Description	<p>This gene encodes a highly conserved nonhistone protein, which is a member of the heterochromatin protein family. The protein is enriched in the heterochromatin and associated with centromeres. The protein has a single N-terminal chromodomain which can bind to histone proteins via methylated lysine residues, and a C-terminal chromo shadow-domain (CSD) which is responsible for the homodimerization and interaction with a number of chromatin-associated nonhistone proteins. The protein may play an important role in the epigenetic control of chromatin structure and gene expression. Several related pseudogenes are located on chromosomes 1, 3, and X. Multiple alternatively spliced variants, encoding the same protein, have been identified.</p>
Form	25 mM Tris HCl, pH 7.3, 100 mM glycine, 10% glycerol.
Molecular Mass	21.2 kDa
AA Sequence	<p>MGKKQNKKKVEEVLEEEEEYYVEKVLDRRVVKGKVEYLLKWKGFSDDEDNTWEPE ENLDCPDLIAEFLQS QKTAHETDKSEGGKRKADSDSEDKGEESKPKKKKEESEKPR GFARGLEPERIIGATDSSGELMFLMKWKN</p>

 Tel: 1-631-559-9269 1-516-512-3133

 Email: info@creative-biomart.com  Fax: 1-631-938-8127

 45-1 Ramsey Road, Shirley, NY 11967, USA

SDEADLVPAKEANVKCPQVVISFYEERLTWHSYPSEDDDKKDDKNTRTRPLEQKLIS
EEDLAANDILDYKDDDDKV

Purity > 80% as determined by SDS-PAGE and Coomassie blue staining.

Stability Stable for 12 months from the date of receipt of the product under proper storage and handling conditions. Avoid repeated freeze-thaw cycles.

Storage Store at -80 centigrade.

Concentration >50 ug/mL as determined by microplate BCA method.

Preparation Recombinant protein was captured through anti-DDK affinity column followed by conventional chromatography steps.

Full Length Full L.

GENE INFORMATION

Gene Name [CBX1 chromobox 1 \[Homo sapiens \(human\) \]](#)

Official Symbol [CBX1](#)

Synonyms CBX; M31; MOD1; p25beta; HP1-BETA; HP1Hsbeta; HP1Hs-beta

Gene ID [10951](#)

mRNA Refseq [NM_006807.5](#)

Protein Refseq [NP_006798.1](#)

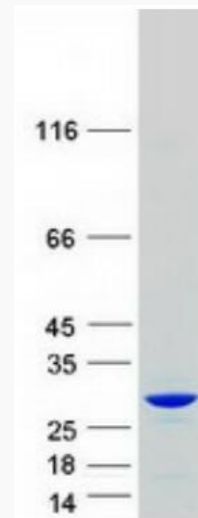
 Tel: 1-631-559-9269 1-516-512-3133

 Email: info@creative-biomart.com  Fax: 1-631-938-8127

 45-1 Ramsey Road, Shirley, NY 11967, USA

MIM 604511

UniProt ID P83916



Coomassie blue staining of purified CBX1 protein.

 Tel: 1-631-559-9269 1-516-512-3133

 Email: info@creative-biomart.com  Fax: 1-631-938-8127

 45-1 Ramsey Road, Shirley, NY 11967, USA