

Recombinant Human CBX3 Protein, Myc/DDK-tagged, C13 and N15-labeled

Cat. No. CBX3-6522H **Lot. No.** (See product label)

SPECIFICATION

Product Overview	CBX3 MS Standard C13 and N15-labeled recombinant protein (NP_057671) with a C-terminal MYC/DDK tag, was expressed in HEK293 cells.
Species	Human
Source	HEK293
Description	At the nuclear envelope, the nuclear lamina and heterochromatin are adjacent to the inner nuclear membrane. The protein encoded by this gene binds DNA and is a component of heterochromatin. This protein also can bind lamin B receptor, an integral membrane protein found in the inner nuclear membrane. The dual binding functions of the encoded protein may explain the association of heterochromatin with the inner nuclear membrane. This protein binds histone H3 tails methylated at Lys-9 sites. This protein is also recruited to sites of ultraviolet-induced DNA damage and double-strand breaks. Two transcript variants encoding the same protein but differing in the 5' UTR, have been found for this gene.
Molecular Mass	20.8 kDa
AA Sequence	MASNKTTLQKMGKKQNGKSKKVEEAPEEFVVEKVLDRRVVNGKVEYFLKWKGFT DADNTWEPEENLDCPELIEAFLNSQKAGKEKDGTKRKSLSDSESDSKSKKKRDAA DKPRGFARGLDPERIIGATDSSGELMFLMKWKDSDEADLVLAKEANMKCPQIVIAFY EERLTWHSCPEDEAQTRTRPLEQKLISEEDLAANDILDYKDDDDKV

 Tel: 1-631-559-9269 1-516-512-3133

 Email: info@creative-biomart.com  Fax: 1-631-938-8127

 45-1 Ramsey Road, Shirley, NY 11967, USA

Purity	> 80% as determined by SDS-PAGE and Coomassie blue staining
Stability	Stable for 3 months from receipt of products under proper storage and handling conditions.
Storage	Store at -80 centigrade. Avoid repeated freeze-thaw cycles.
Concentration	50 µg/mL as determined by BCA
Storage Buffer	100 mM glycine, 25 mM Tris-HCl, pH 7.3.

GENE INFORMATION

Gene Name	CBX3 chromobox homolog 3 [Homo sapiens (human)]
Official Symbol	CBX3
Synonyms	CBX3; chromobox homolog 3; chromobox homolog 3 (Drosophila HP1 gamma); chromobox protein homolog 3; HP1 gamma homolog (Drosophila); HP1Hs gamma; HP1 gamma homolog; modifier 2 protein; heterochromatin-like protein 1; heterochromatin protein HP1 gamma; heterochromatin protein 1 homolog gamma; chromobox homolog 3 (HP1 gamma homolog, Drosophila); HECH; HP1-GAMMA; HP1Hs-gamma;
Gene ID	11335
mRNA Refseq	NM_016587
Protein Refseq	NP_057671
MIM	604477

 Tel: 1-631-559-9269 1-516-512-3133

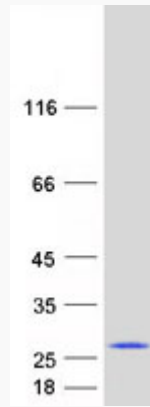
 Email: info@creative-biomart.com  Fax: 1-631-938-8127

 45-1 Ramsey Road, Shirley, NY 11967, USA

UniProt ID

Q13185

SDS-PAGE



 Tel: 1-631-559-9269 1-516-512-3133

 Email: info@creative-biomart.com  Fax: 1-631-938-8127

 45-1 Ramsey Road, Shirley, NY 11967, USA