

## Recombinant Human CBX7, His-tagged

Cat. No. CBX7-10772H Lot. No. (See product label)

### SPECIFICATION

<b>Product Overview</b>	Recombinant Human CBX7 protein(NP_001333672.1)(1-251aa), fused to a N-terminal His tag, was expressed in E.coli and purified by Ni-sepharose.
<b>Species</b>	Human
<b>Source</b>	E.coli
<b>ProteinLength</b>	1-251aa
<b>Form</b>	If the delivery form is liquid, the default storage buffer is Tris/PBS-based buffer, 5%-50% glycerol. If the delivery form is lyophilized powder, the buffer before lyophilization is Tris/PBS-based buffer, 6% Trehalose, pH 8.0.
<b>Molecular Mass</b>	32.3kDa
<b>AA Sequence</b>	MELSAIGEQVFAVESIRKKRVRKGGKVEYLVKWKGWPPKYSTWEPEEHILDPRLVMA YEEKEERDRASGYRKRGPVKRLLQLRYSMDLRSSHAKAGKEKLCFSLTCPLGSG SPEGVVKAGAPELVKGPLVPTLPFPLRKPRKAHKYLRLSRKKFPPRGPVNLESHSH RRELFLQEPPAPDVLQAAGEWEPAAQPPEEEADADLAEGPPPWTPALPSSEVTVTD ITANSITVTFREAQAAEGFFRDRSGKF
<b>Purity</b>	Greater than 90% as determined by SDS-PAGE.
<b>Notes</b>	Repeated freezing and thawing is not recommended. Store working aliquots at 4°C

 Tel: 1-631-559-9269 1-516-512-3133

 Email: [info@creative-biomart.com](mailto:info@creative-biomart.com)  Fax: 1-631-938-8127

 45-1 Ramsey Road, Shirley, NY 11967, USA

for up to one week.

**Storage**

Store at -20°C upon receipt, aliquoting is necessary for multiple use. Avoid repeated freeze-thaw cycles.

**Reconstitution**

We recommend that this vial be briefly centrifuged prior to opening to bring the contents to the bottom. Please reconstitute protein in deionized sterile water to a concentration of 0.1-1.0 mg/mL. We recommend to add 5-50% of glycerol (final concentration) and aliquot for long-term storage at -20°C/-80°C. Our default final concentration of glycerol is 50%. Customers could use it as reference.

## GENE INFORMATION

**Gene Name**      [CBX7 chromobox 7 \[ Homo sapiens \(human\) \]](#)

**Official Symbol**      [CBX7](#)

**Synonyms**      CBX7; Chromobox protein homolog 7

**Gene ID**      [23492](#)

**mRNA Refseq**      [NM\\_001346743.2](#)

**Protein Refseq**      [NP\\_001333672.1](#)

**MIM**      [608457](#)

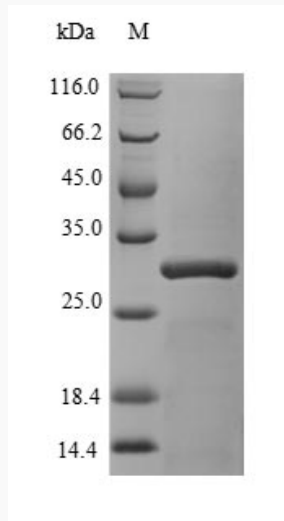
**UniProt ID**      [O95931](#)

 Tel: 1-631-559-9269    1-516-512-3133

 Email: [info@creative-biomart.com](mailto:info@creative-biomart.com)     Fax: 1-631-938-8127

 45-1 Ramsey Road, Shirley, NY 11967, USA

**SDS-PAGE**



 Tel: 1-631-559-9269 1-516-512-3133

 Email: [info@creative-biomart.com](mailto:info@creative-biomart.com)  Fax: 1-631-938-8127

 45-1 Ramsey Road, Shirley, NY 11967, USA