

Recombinant Human CC2D1A Protein, GST-Tagged

Cat. No. CC2D1A-0489H Lot. No. (See product label)

SPECIFICATION

Product Overview	Human CC2D1A full-length ORF (NP_060191.3, 1 a.a. - 951 a.a.) recombinant protein with GST-tag at N-terminal.
Species	Human
Source	Wheat Germ
Description	This gene encodes a transcriptional repressor that binds to a conserved 14-bp 5'-repressor element and regulates expression of the 5-hydroxytryptamine (serotonin) receptor 1A gene in neuronal cells. The DNA binding and transcriptional repressor activities of the protein are inhibited by calcium. A mutation in this gene results in nonsyndromic mental retardation-3.[provided by RefSeq, Oct 2009]
Molecular Mass	130.5 kDa
AA Sequence	MHKRKGPPGPPGRGAAAARQLGLLVDLSPDGLMIPEDGANDEELEEFLALVGGQ PPALEKLGKGPLPMEAIKMASLCMRDPDEDEEEGTDDEDDLEADDDLLAELNEVL GEEQKASETPPPVAQPKPEAPHPGLETTLQERLALYQTAIESARQAGDSAKMRRYD RGLKTLENLLASIRKGNIDEADIPPPVAIGKGPASTPTYSPAPTQPAPRIASAPEPRV TLEGPSATAPASSPGLAKPQMPPGPCSPGPLAQLQSRQRDYKLAALHAKQQGDTT AAARHFRVAKSFDVLEALSRGEPVDLSCLPPPPDQLPPDPPSPSPQPTPATAPST TEVPPPPRTLLEALEQRMERYQVAAAQAKSKGDQRKARMHERIVKQYQDAIRAHKA GRAVDVAELPVPFGFPIQGLEATKPTQQSLVGVLETAMKLANQDEGPEDEEDEV KKQNSPVAPTAQPKAPPSRTPQSGSAPTAKAPPKATSTRAQQQLAFLEGRKKQLLQ

 Tel: 1-631-559-9269 1-516-512-3133

 Email: info@creative-biomart.com  Fax: 1-631-938-8127

 45-1 Ramsey Road, Shirley, NY 11967, USA

AALRAKQKNDVEGAKMHLRQAKGLEPMLASRNGLPVDITKVPPAPV NKDDFALVQ
 RPGPGLSQEAARRYGELTKLIRQQHEMCLNHSNQFTQLGNITETTKFEKLAEDCKR
 SMDILKQAFVVRGLPTPTARFEQRTFSVIKIFPDLSSNDMLLFIVKGINLPTPPGLSPGD
 LDVFRVDFPYPNVEEAQDKTSVIKNTDSPEFKEQFKLCINRSHRGFRRAIQTKGIK
 FEVVHKGGLFKTDRVLGTAQLKDALEIACEVREILEVLDGRRPTGGRLEVMVRIREP
 LTAQQLETTTERWLVIDPVPAAVPTQVAGPKGKAPPVPAPARESGNRSARPLHSL
 VLAFDQERLERKILALRQARRPVPPEVAQQYQDIMQRSQWQRAQLEQGGVGIRRE
 YAAQLERQLQFYTEAARRLGNDGSRDAAKEALYRRNLVESELQRLRR

Applications

Enzyme-linked Immunoabsorbent Assay
 Western Blot (Recombinant protein)
 Antibody Production
 Protein Array

Storage

Store at -80 centigrade. Aliquot to avoid repeated freezing and thawing.

Storage Buffer

50 mM Tris-HCl, 10 mM reduced Glutathione, pH=8.0 in the elution buffer.

GENE INFORMATION

Gene Name

CC2D1A coiled-coil and C2 domain containing 1A [Homo sapiens]

Official Symbol

CC2D1A

Synonyms

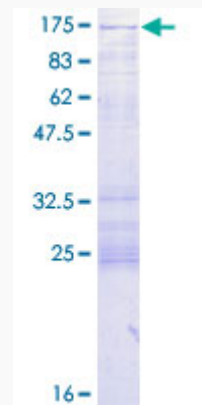
CC2D1A; coiled-coil and C2 domain containing 1A; coiled-coil and C2 domain-containing protein 1A; FLJ20241; mental retardation; nonsyndromic; autosomal recessive; 3; MRT3; Akt kinase-interacting protein 1; putative NFkB activating protein; FRE under dual repression-binding protein 1; putative NF-kappa-B-activating protein 023N; mental retardation, nonsyndromic, autosomal recessive, 3; five repressor element under dual repression-binding protein 1; five prime repressor element under

 Tel: 1-631-559-9269 1-516-512-3133

 Email: info@creative-biomart.com  Fax: 1-631-938-8127

 45-1 Ramsey Road, Shirley, NY 11967, USA

dual repression-binding protein 1; FREUD-1; Freud-1/Aki1; FLJ41160;

Gene ID 54862**mRNA Refseq** NM_017721**Protein Refseq** NP_060191**MIM** 610055**UniProt ID** Q6P1N0**Quality Control
Testing**

12.5% SDS-PAGE Stained with Coomassie Blue.

 Tel: 1-631-559-9269 1-516-512-3133 Email: info@creative-biomart.com  Fax: 1-631-938-8127 45-1 Ramsey Road, Shirley, NY 11967, USA