

## Recombinant Human CCDC112 Protein, GST-Tagged

Cat. No. CCDC112-0512H Lot. No. (See product label)

### SPECIFICATION

<b>Product Overview</b>	Human CCDC112 full-length ORF (NP_689762.1, 1 a.a. - 446 a.a.) recombinant protein with GST-tag at N-terminal.
<b>Species</b>	Human
<b>Source</b>	Wheat Germ
<b>Description</b>	CCDC112 (Coiled-Coil Domain Containing 112) is a Protein Coding gene.
<b>Molecular Mass</b>	79.9 kDa
<b>AA Sequence</b>	MEKDKHSHFYNQKSDFRIEHSMLEELNKLHSRKTERRAKIQQLAKIHNNVKKLQH QLKDVKPTPDFVEKLRMMEEIENAINTFKEEQRLIYEELIKEEKTNNNELSAISRKIDT WALGNSETEKAFRAISSKVPVDKVTPLPEEVLD FEKFLQQTGGRQGAWDDYDH QNFVKVRNKHGKPTFMEEVLEHLPGKTQDEVQQHEKWYQKFLALEERKKESIQIW KTKKQQKREEIFKLKEKADNTPVLFHNKQEDNQKQKEEQRKKQKLAVEAWKKQKSI EMSMKCASQLKEEEEKEKKHQKERQRQFKLKLLESYQQKKEQEEFLRLEKEIRE NAEKAERKNAADGISRFQERDLHKLELKILDRQAKEDKSKQRRLAKLKEKVENN VSRDPSRLYKPTKGWEERTKKIGPTGSGPLLHIPHRAIPTWRQGIQRRV
<b>Applications</b>	Enzyme-linked Immunoabsorbent Assay Western Blot (Recombinant protein) Antibody Production Protein Array

 Tel: 1-631-559-9269 1-516-512-3133

 Email: [info@creative-biomart.com](mailto:info@creative-biomart.com)  Fax: 1-631-938-8127

 45-1 Ramsey Road, Shirley, NY 11967, USA

**Storage** Store at -80 centigrade. Aliquot to avoid repeated freezing and thawing.

**Storage Buffer** 50 mM Tris-HCl, 10 mM reduced Glutathione, pH=8.0 in the elution buffer.

## GENE INFORMATION

**Gene Name** CCDC112 coiled-coil domain containing 112 [ Homo sapiens ]

**Official Symbol** CCDC112

**Synonyms** CCDC112; coiled-coil domain containing 112; coiled-coil domain-containing protein 112; MGC39633; mutated in bladder cancer 1; mutated in bladder cancer protein 1; MBC1;

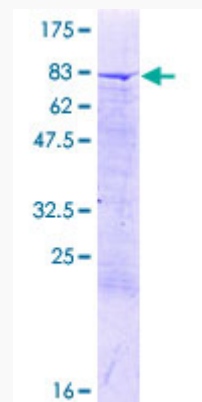
**Gene ID** 153733

**mRNA Refseq** NM\_001040440

**Protein Refseq** NP\_001035530

**UniProt ID** Q8NEF3

**Quality Control Testing**



 Tel: 1-631-559-9269 1-516-512-3133

 Email: [info@creative-biomart.com](mailto:info@creative-biomart.com)  Fax: 1-631-938-8127

 45-1 Ramsey Road, Shirley, NY 11967, USA



12.5% SDS-PAGE Stained with Coomassie Blue.

 Tel: 1-631-559-9269 1-516-512-3133

 Email: [info@creative-biomart.com](mailto:info@creative-biomart.com)  Fax: 1-631-938-8127

 45-1 Ramsey Road, Shirley, NY 11967, USA