

## Recombinant Rat CCDC112 protein, His-tagged

**Cat. No.** CCDC112-4582R    **Lot. No.** (See product label)

### SPECIFICATION

<b>Product Overview</b>	Recombinant Rat CCDC112 protein(D4A095)(1-525 aa), fused with C-terminal His tag, was expressed in E.coli.
<b>Species</b>	Rat
<b>Source</b>	E.coli
<b>ProteinLength</b>	1-525 aa
<b>Form</b>	For liquid formulations, the standard storage buffer consists of a Tris or PBS based solution supplemented with 5-50% glycerol. When provided as lyophilized powder, the product undergoes freeze-drying from a Tris- or PBS-based formulation containing 6% trehalose, adjusted to pH 8.0 prior to the lyophilization process.
<b>Molecular Mass</b>	68.1 kDa
<b>AASequence</b>	<p>MAALTTVVVAAAATAVAGAVAGAGAAAGTGVGAAPTPQQSNVGFSAASGGIRPFQL          QNWKQKVSWTKKAEFIRTAEKLNQVIVIEKDKHSHFYNQRGHFRTEYSLLELENK          LINSRKMERAKIQQLAKIHNNVKKLQNQLKSVKPTPDFVEKLRMMEEIENAINTFK          EEQRLIYEELIQEEKTTNNELSAISRRIESWALGNSETERAFRAISSKLPVDRVTPSTL          PEEVIEFEKFLQQTGGRQGGWDDLHDHQNFKVRNKHKGKLTFFMKEVIEHLPGRGLD          EIQQHEKWYQKFLALEEKKKESIQNWKIKKQQKKEEILKLEKADTTPPPSQSKPED          NLKQKEEQRKKQKLAVEAWKKQKSIEMSVKQASQLREEEKERKQQRERQRQSKL          KLLLESYTQQKREQEEFLRLEKEIKEKTEKAEKRKTADEISRFRDLHKLELKILDR          QAKEEKAQKRRRLTKLKEKVESNVGRDPSRLYKPTRGWQRTKKIGPLDSGPLLHI</p>

 Tel: 1-631-559-9269    1-516-512-3133

 Email: [info@creative-biomart.com](mailto:info@creative-biomart.com)     Fax: 1-631-938-8127

 45-1 Ramsey Road, Shirley, NY 11967, USA

PHRAIPTWRQGI

**Purity** Greater than 85% as determined by SDS-PAGE.

**Storage** Store at -20°C/-80°C upon receipt, aliquoting is necessary for mutiple use. Avoid repeated freeze-thaw cycles.

**Reconstitution** Please reconstitute protein indeionized sterile water to a concentration of 0.1-1.0 mg/mL. Aliquot for long-term storage at -80°C.

## GENE INFORMATION

**Gene Name** [Ccdc112 coiled-coil domain containing 112 \[ Rattus norvegicus \]](#)

**Official Symbol** [CCDC112](#)

**Synonyms** CCDC112; coiled-coil domain containing 112; coiled-coil domain-containing protein 112; RGD1561942;

**Gene ID** [498858](#)

**mRNA Refseq** [NM\\_001109124](#)

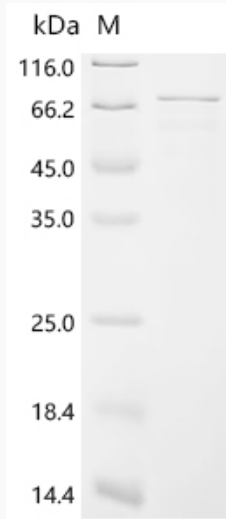
**Protein Refseq** [NP\\_001102594](#)

 Tel: 1-631-559-9269 1-516-512-3133

 Email: [info@creative-biomart.com](mailto:info@creative-biomart.com)  Fax: 1-631-938-8127

 45-1 Ramsey Road, Shirley, NY 11967, USA

**SDS-PAGE**



 Tel: 1-631-559-9269 1-516-512-3133

 Email: [info@creative-biomart.com](mailto:info@creative-biomart.com)  Fax: 1-631-938-8127

 45-1 Ramsey Road, Shirley, NY 11967, USA