

Recombinant Human CCDC120 Protein, Myc/DDK-tagged, C13 and N15-labeled

Cat. No. CCDC120-6393H **Lot. No.** (See product label)

SPECIFICATION

Product Overview

CCDC120 MS Standard C13 and N15-labeled recombinant protein (NP_296375) with a C-terminal MYC/DDK tag, was expressed in HEK293 cells.

Species

Human

Source

HEK293

Description

This gene encodes a protein that contains a coiled-coil domain. Several alternatively spliced transcript variants encoding multiple isoforms have been found for this gene.

Molecular Mass

67.4 kDa

AA Sequence

```
MEVKGQLISSPTFNAPAALFGAAPQVKSERLRGLLDRQRTLQEALSLKLQELRKVC
LQEAELTGQLPPECPLEPGERPQLVRRRPPTARAYPPPHPNQAHHSLCPAEELALE
ALEREVSVQQQIAAAAARRLALAPDLSTEQRRRRRQVQADALRRLHELEEQLRDVRA
RLGLPVLPLPQPLPLSTGSVITTQGVCLGMRLAQLSQEDVVLHSESSLSSESGASHD
NEEPHGCFSLAERPSPPKAWDQLRAVSGGSPERRTPWKPPPSDLYGDLKSRNSV
ASPTSPTRSLPRSASSFEGRSVPATPVLTRGAGPQLCKPEGLHSRQWSGSQDSQM
GFPRADPASDRASLFFVARTRRSNSSEALLVDRAAGGGAGSPPAPLAPSASGPPVCK
SSEVLYERPQPTPAFSSRTAGPPDPPRAARPSSAAPASRGAPRLPPVCGDFLLDYS
LDRGLPRSGGGTGWGELPPAAEVPGPLSRRDGLLTMPLGPPPVAADSNSPLLRT
KDPHTRATRTRKPCGLPPEAAEGPEVHPNPLLWMPPTTRIPSAGERSGHKNLALEGL
RDWYIRNSGLAAGPQRRPVLPSVGPPLPPFLHARCYEVGQALYGAPSQAPLPHSR
```

 Tel: 1-631-559-9269 1-516-512-3133

 Email: info@creative-biomart.com  Fax: 1-631-938-8127

 45-1 Ramsey Road, Shirley, NY 11967, USA



SFTAPPVSGRYGGCFYTRTRPLEQKLISEEDLAANDILDYKDDDDKV

Purity > 80% as determined by SDS-PAGE and Coomassie blue staining

Stability Stable for 3 months from receipt of products under proper storage and handling conditions.

Storage Store at -80 centigrade. Avoid repeated freeze-thaw cycles.

Concentration 50 µg/mL as determined by BCA

Storage Buffer 100 mM glycine, 25 mM Tris-HCl, pH 7.3.

GENE INFORMATION

Gene Name CCDC120 coiled-coil domain containing 120 [Homo sapiens (human)]

Official Symbol CCDC120

Synonyms CCDC120; coiled-coil domain containing 120; JM11; coiled-coil domain-containing protein 120

Gene ID 90060

mRNA Refseq NM_033626

Protein Refseq NP_296375

MIM 300947

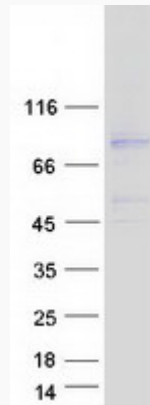
UniProt ID B4DFC1

Tel: 1-631-559-9269 1-516-512-3133

Email: info@creative-biomart.com Fax: 1-631-938-8127

45-1 Ramsey Road, Shirley, NY 11967, USA

SDS-PAGE



 Tel: 1-631-559-9269 1-516-512-3133

 Email: info@creative-biomart.com  Fax: 1-631-938-8127

 45-1 Ramsey Road, Shirley, NY 11967, USA