

## Recombinant Human CCDC127 Protein, GST-Tagged

**Cat. No.** CCDC127-0522H    **Lot. No.** (See product label)

### SPECIFICATION

<b>Product Overview</b>	Human CCDC127 full-length ORF (NP_660308.1, 1 a.a. - 260 a.a.) recombinant protein with GST-tag at N-terminal.
<b>Species</b>	Human
<b>Source</b>	Wheat Germ
<b>Description</b>	CCDC127 (Coiled-Coil Domain Containing 127) is a Protein Coding gene.
<b>Molecular Mass</b>	57.2 kDa
<b>AA Sequence</b>	MNNLNDPPNWNIRPNSRADGGDSRWNYALLVPMLGLAAFRWIWSRESQKEVEK EREAYRRRTAAFQQDLEAKYHAMISENRRAVAQLSLELEKEQNRTASYREALISQG RKLVEEKKLLEQERAQVMQEKRQVQPLRSAYLSCLQREENWQRRARLLLKEFEAVL TERQNIYCSLFLPRSKRLEIEKSLLRASVDPVAADLEMAAGLTDIFQHDTYCGDVW NTNKRQNGRLMWLYLKYWELVVELKKFKRVEEAILEK
<b>Applications</b>	Enzyme-linked Immunoabsorbent Assay Western Blot (Recombinant protein) Antibody Production Protein Array
<b>Storage</b>	Store at -80 centigrade. Aliquot to avoid repeated freezing and thawing.
<b>Storage Buffer</b>	50 mM Tris-HCl, 10 mM reduced Glutathione, pH=8.0 in the elution buffer.

 Tel: 1-631-559-9269    1-516-512-3133

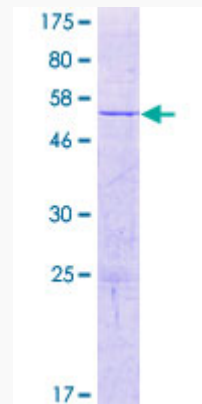
 Email: [info@creative-biomart.com](mailto:info@creative-biomart.com)     Fax: 1-631-938-8127

 45-1 Ramsey Road, Shirley, NY 11967, USA

## GENE INFORMATION

<b>Gene Name</b>	CCDC127 coiled-coil domain containing 127 [ Homo sapiens ]
<b>Official Symbol</b>	CCDC127
<b>Synonyms</b>	CCDC127; coiled-coil domain containing 127; coiled-coil domain-containing protein 127; FLJ25701;
<b>Gene ID</b>	133957
<b>mRNA Refseq</b>	NM_145265
<b>Protein Refseq</b>	NP_660308
<b>UniProt ID</b>	Q96BQ5

### Quality Control Testing



12.5% SDS-PAGE Stained with Coomassie Blue.

 Tel: 1-631-559-9269 1-516-512-3133

 Email: [info@creative-biomart.com](mailto:info@creative-biomart.com)  Fax: 1-631-938-8127

 45-1 Ramsey Road, Shirley, NY 11967, USA