

# Recombinant Human CCDC130 Protein, GST-Tagged

**Cat. No.** CCDC130-0523H    **Lot. No.** (See product label)

## SPECIFICATION

<b>Product Overview</b>	Human CCDC130 full-length ORF (NP_110445.1, 1 a.a. - 396 a.a.) recombinant protein with GST-tag at N-terminal.
<b>Species</b>	Human
<b>Source</b>	Wheat Germ
<b>Description</b>	CCDC130 (Coiled-Coil Domain Containing 130) is a Protein Coding gene. Diseases associated with CCDC130 include Trench Fever and Phlebotomus Fever. Among its related pathways are Ectoderm Differentiation. An important paralog of this gene is CCDC94.
<b>Molecular Mass</b>	71.2 kDa
<b>AA Sequence</b>	<p>MGERKGVNKYYPPDFNPEKHGSLNRYHNSHPLRERARKLSQGILIRFEMPYNIWCD  GCKNHIGMGVRYNAEKKKVGNYYTTPYRFRMKCHLCVNYIEMQTDPANCDYVIVS  GAQRKEERWDMADNEQVLTTEHEKKQKLETDAMFRLEHGEADRSTLKKALPTLSHI  QEAQSAWKDDFALNSMLRRRFREKKKAIQEEEEERDQALQAKASLTIPLVPETEDDR  KLAALLKFHTLDSYEDKQKLRTEIISRSWFPSAPGSASSSKVSGVLKLAQSRRTAL  ATSPITVGD LGIVRRRSRDVPESPQHAADTPKSGEPRVPEEAAQDRPMSPGDCPPE  TTETPKCSSPRGQEGSRQDKPLSPAGSSQEADTPDTRHPCSLGSSLVADYS DSE  SE</p>
<b>Applications</b>	Enzyme-linked Immunoabsorbent Assay Western Blot (Recombinant protein)

 Tel: 1-631-559-9269    1-516-512-3133

 Email: [info@creative-biomart.com](mailto:info@creative-biomart.com)     Fax: 1-631-938-8127

 45-1 Ramsey Road, Shirley, NY 11967, USA

Antibody Production  
Protein Array

**Storage** Store at -80 centigrade. Aliquot to avoid repeated freezing and thawing.

**Storage Buffer** 50 mM Tris-HCl, 10 mM reduced Glutathione, pH=8.0 in the elution buffer.

## GENE INFORMATION

**Gene Name** CCDC130 coiled-coil domain containing 130 [ Homo sapiens ]

**Official Symbol** CCDC130

**Synonyms** coiled-coil domain containing 130; 9 kDa protein; MGC10471; coiled-coil domain-containing protein 130

**Gene ID** 81576

**mRNA Refseq** NM\_030818

**Protein Refseq** NP\_110445

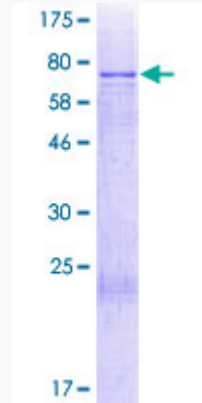
**UniProt ID** P13994

 Tel: 1-631-559-9269 1-516-512-3133

 Email: [info@creative-biomart.com](mailto:info@creative-biomart.com)  Fax: 1-631-938-8127

 45-1 Ramsey Road, Shirley, NY 11967, USA

**Quality Control  
Testing**



12.5% SDS-PAGE Stained with Coomassie Blue.

 Tel: 1-631-559-9269 1-516-512-3133

 Email: [info@creative-biomart.com](mailto:info@creative-biomart.com)  Fax: 1-631-938-8127

 45-1 Ramsey Road, Shirley, NY 11967, USA