

Recombinant Human CCDC130 Protein, Myc/DDK-tagged, C13 and N15-labeled

Cat. No. CCDC130-4625H **Lot. No.** (See product label)

SPECIFICATION

Product Overview	CCDC130 MS Standard C13 and N15-labeled recombinant protein (NP_110445) with a C-terminal MYC/DDK tag, was expressed in HEK293 cells.
Species	Human
Source	HEK293
Description	CCDC130 (Coiled-Coil Domain Containing 130) is a Protein Coding gene. Diseases associated with CCDC130 include Newcastle Disease and Trench Fever. Among its related pathways are Ectoderm Differentiation. An important paralog of this gene is YJU2.
Molecular Mass	44.8 kDa
AA Sequence	<p>MGERKGVNKYYPPDFNPEKHGSLNRYHNSHPLRERARKLSQGILIRFEMPYNIWCD GCKNHIGMGVRYNAEKKKVGNYYTTPPIYRFRMKCHLCVNIEMQTDPANCDYVIVS GAQRKEERWDMADNEQVLTTEHEKKQKLETDAMFRLEHGEADRSTLKKALPTLSHI QEAQSAWKDDFALNSMLRRRFREKKKAIQEEEEERDQALQAKASLTIPLVPETEDDR KLAALLKFHTLDSYEDKQKLRTEIISRSWFPSAPGSASSSKVSGVLKLAQSRRTAL ATSPITVGDLGIVRRRSRDVPESPQHAADTPKSGEPRVPEEAAQDRPMSPGDCPPE TTETPKCSSPRGQEGSRQDKPLSPAGSSQEADTPDTRHPCSLGSSLVADYS DSE SETRTRPLEQKLISEEDLAANDILDYKDDDDKV</p>
Purity	> 80% as determined by SDS-PAGE and Coomassie blue staining

 Tel: 1-631-559-9269 1-516-512-3133

 Email: info@creative-biomart.com  Fax: 1-631-938-8127

 45-1 Ramsey Road, Shirley, NY 11967, USA

Stability	Stable for 3 months from receipt of products under proper storage and handling conditions.
Storage	Store at -80 centigrade. Avoid repeated freeze-thaw cycles.
Concentration	50 µg/mL as determined by BCA
Storage Buffer	100 mM glycine, 25 mM Tris-HCl, pH 7.3.

GENE INFORMATION

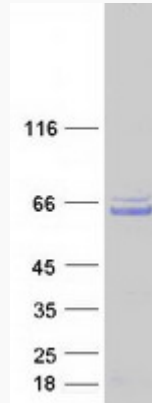
Gene Name	CCDC130 coiled-coil domain containing 130 [Homo sapiens (human)]
Official Symbol	CCDC130
Synonyms	coiled-coil domain containing 130; 9 kDa protein; MGC10471; coiled-coil domain-containing protein 130
Gene ID	81576
mRNA Refseq	NM_030818
Protein Refseq	NP_110445
UniProt ID	P13994

 Tel: 1-631-559-9269 1-516-512-3133

 Email: info@creative-biomart.com  Fax: 1-631-938-8127

 45-1 Ramsey Road, Shirley, NY 11967, USA

SDS-PAGE



 Tel: 1-631-559-9269 1-516-512-3133

 Email: info@creative-biomart.com  Fax: 1-631-938-8127

 45-1 Ramsey Road, Shirley, NY 11967, USA