

Recombinant Human Full Length CCDC22 Protein, N-His tagged

Cat. No. CCDC22-12HFL **Lot. No.** (See product label)

SPECIFICATION

| | |
|-------------------------|---|
| Product Overview | Purified recombinant protein of Human coiled-coil domain containing 22 (CCDC22), full length, with N-terminal His tag, expressed in E. coli. |
| Species | Human |
| Source | E.coli |
| ProteinLength | Full Length |
| Description | This gene encodes a protein containing a coiled-coil domain. The encoded protein functions in the regulation of NF-κB (nuclear factor kappa-light-chain-enhancer of activated B cells) by interacting with COMMD (copper metabolism Murr1 domain-containing) proteins. The mouse orthologous protein has been shown to bind copines, which are calcium-dependent, membrane-binding proteins that may function in calcium signaling. This human gene has been identified as a novel candidate gene for syndromic X-linked intellectual disability. |
| Molecular Mass | 70.8 kDa |
| Purity | > 80 % as determined by SDS-PAGE and Coomassie blue staining |
| Notes | For testing in cell culture applications, please filter before use. Note that you may experience some loss of protein during the filtration process. |

 Tel: 1-631-559-9269 1-516-512-3133

 Email: info@creative-biomart.com  Fax: 1-631-938-8127

 45-1 Ramsey Road, Shirley, NY 11967, USA

| | |
|-----------------------|---|
| Stability | Stable for 12 months from the date of receipt of the product under proper storage and handling conditions. Avoid repeated freeze-thaw cycles. |
| Storage | Store at -80 centigrade after receiving vials. |
| Concentration | > 0.05 µg/µL as determined by microplate BCA method |
| Storage Buffer | 50 mM Tris-HCl, pH 8.0, 8 M urea |

GENE INFORMATION

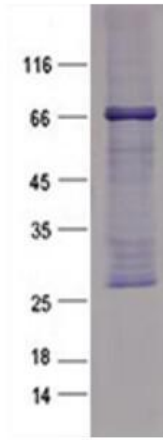
| | |
|------------------------|---|
| Gene Name | CCDC22 coiled-coil domain containing 22 [Homo sapiens (human)] |
| Official Symbol | CCDC22 |
| Synonyms | CCDC22; coiled-coil domain containing 22; JM1; RTSC2; CXorf37; coiled-coil domain-containing protein 22 |
| Gene ID | 28952 |
| mRNA Refseq | NM_014008 |
| Protein Refseq | NP_054727 |
| MIM | 300859 |
| UniProt ID | O60826 |

 Tel: 1-631-559-9269 1-516-512-3133

 Email: info@creative-biomart.com  Fax: 1-631-938-8127

 45-1 Ramsey Road, Shirley, NY 11967, USA

Purified recombinant protein CCDC22 was analyzed by SDS-PAGE gel and Coomossie Blue Staining.



 Tel: 1-631-559-9269 1-516-512-3133

 Email: info@creative-biomart.com  Fax: 1-631-938-8127

 45-1 Ramsey Road, Shirley, NY 11967, USA