

Recombinant Human CCDC36 Protein, GST-Tagged

Cat. No. CCDC36-0546H Lot. No. (See product label)

SPECIFICATION

Product Overview	Human CCDC36 full-length ORF (NP_835467.1, 1 a.a. - 584 a.a.) recombinant protein with GST tag at N-terminal.
Species	Human
Source	Wheat Germ
Description	CCDC36 (Coiled-Coil Domain Containing 36) is a Protein Coding gene.
Molecular Mass	91.5 kDa
AA Sequence	<p>MLSIPSGSGNKKSSNWNQNDYSSLSDSQFLFGSQFCPENSETLSAPLDFGAHLR HSKQSQQNYLEGEPSIFTKYQTKPQLFGGDIKGGFLPPPPLSVGKSKGLLEQFEEKK KRAKDKCDSETLYNFVSNVRESILRLQTSVEKSEDHLSSRSQSILDSLETVAKTLQET IQAQNDLVFEAVQDKGNMEQAILEMKKRFEARQGEFIEMKSNLKHLEVLVAQQSQE FQQLCEQLGQLNVPSVLAELKRLISVPPVKDSASQTSPPPLAQSLNLRQEKYTSEKP VLWQAQALPAAWNPGMGLQPGFEDVWGEAKNDLQEEAALPAFGSHERNRHV KDKVVQTNCKNWAVTKTGAKNHGSSVPGHKIPSDRDLVSQGASQLTSLEINFSTSIK NACQKYQAQSMFLCDPREHLVIKQKDGTVEMRGKDKKQQRKAHRAHRGRLIASK QKQIPIQTCKFNSKYQSPQPAISVPQSPFLGQQEPRAQPLHLQCPRSPRKPVCPILG GTVMPNKTVRAVQGRLLQLSRCSSQDNWLLSSSSQGDHQMMSWFSDLNLGCSETP LCKEAGKNLLYDLGFDSSDDDDGF</p>
Applications	Enzyme-linked Immunoabsorbent Assay Western Blot (Recombinant protein)

 Tel: 1-631-559-9269 1-516-512-3133

 Email: info@creative-biomart.com  Fax: 1-631-938-8127

 45-1 Ramsey Road, Shirley, NY 11967, USA

Antibody Production
Protein Array

Storage Store at -80 centigrade. Aliquot to avoid repeated freezing and thawing.

Storage Buffer 50 mM Tris-HCl, 10 mM reduced Glutathione, pH=8.0 in the elution buffer.

GENE INFORMATION

Gene Name [CCDC36 coiled-coil domain containing 36 \[Homo sapiens \]](#)

Official Symbol [CCDC36](#)

Synonyms CCDC36; coiled-coil domain containing 36; coiled-coil domain-containing protein 36; cancer/testis antigen 74; CT74; FLJ25320;

Gene ID [339834](#)

mRNA Refseq [NM_001135197](#)

Protein Refseq [NP_001128669](#)

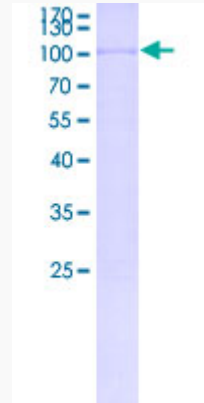
UniProt ID [Q8IYA8](#)

 Tel: 1-631-559-9269 1-516-512-3133

 Email: info@creative-biomart.com  Fax: 1-631-938-8127

 45-1 Ramsey Road, Shirley, NY 11967, USA

**Quality Control
Testing**



12.5% SDS-PAGE Stained with Coomassie Blue

 Tel: 1-631-559-9269 1-516-512-3133

 Email: info@creative-biomart.com  Fax: 1-631-938-8127

 45-1 Ramsey Road, Shirley, NY 11967, USA