

## Recombinant Human CCDC65 Protein, GST-Tagged

Cat. No. CCDC65-0569H Lot. No. (See product label)

### SPECIFICATION

<b>Product Overview</b>	Human CCDC65 full-length ORF (AAH39317.2, 1 a.a. - 484 a.a.) recombinant protein with GST-tag at N-terminal.
<b>Species</b>	Human
<b>Source</b>	Wheat Germ
<b>Description</b>	This gene encodes a sperm tail protein that is highly expressed in adult testis, spermatocytes and spermatids. The protein plays a critical role in the assembly of the nexin-dynein regulatory complex. Mutations in this gene result in primary ciliary dyskinesia. [provided by RefSeq, Nov 2013]
<b>Molecular Mass</b>	83.7 kDa
<b>AA Sequence</b>	MPKKEKMAKTPLSDEKQLLLFQQKLLAAEEEMAKKKERLLSQFLKDKLAKEEHNSALN LNKINTQWRTVLREVKTRELHKDIEILSQTFFERVVDCKDNVIKSLAKDLSEAEQYAH ALRSHLHNVQLLALQRHRLSLLSESYNMELEALTKEFETERKTIIDQHEKEIHYLQDI FMAMEQNYIDSEYESKLEFQSMWNDLKNMNLEEKHFLRLHLENRVEDLWRKFQDV LKNYTDATEDRKAAFETLQVKDEKSSKEIEVQMKKIQKLQDAITISGKIMIHRSRESD ENRYIRNDKELVLVQLRKLKAQRTQARAASQKNLVRLTLESNATLKALRKIVDKGEKI LKLAEICRKFETEEKVLFPYSSVLTPEQEQGIQKNNLEELTEELTKVMVDYIGMENF WKRYNKVKLEQLSLQHRRAQLLDINGKLREMLKQYLDGISVSDEVLSQLNPLFIVNY QSNLLQPLSIRIAHPGDKQHPTT
<b>Applications</b>	Enzyme-linked Immunoabsorbent Assay

 Tel: 1-631-559-9269 1-516-512-3133

 Email: [info@creative-biomart.com](mailto:info@creative-biomart.com)  Fax: 1-631-938-8127

 45-1 Ramsey Road, Shirley, NY 11967, USA



Western Blot (Recombinant protein)  
Antibody Production  
Protein Array

**Storage** Store at -80 centigrade. Aliquot to avoid repeated freezing and thawing.

**Storage Buffer** 50 mM Tris-HCl, 10 mM reduced Glutathione, pH=8.0 in the elution buffer.

## GENE INFORMATION

**Gene Name** CCDC65 coiled-coil domain containing 65 [ Homo sapiens ]

**Official Symbol** CCDC65

**Synonyms** NYD-SP28

**Gene ID** 85478

**mRNA Refseq** NM\_033124

**Protein Refseq** NP\_149115

**MIM** 611088

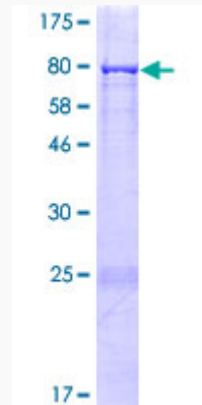
**UniProt ID** Q8IXS2

 Tel: 1-631-559-9269 1-516-512-3133

 Email: [info@creative-biomart.com](mailto:info@creative-biomart.com)  Fax: 1-631-938-8127

 45-1 Ramsey Road, Shirley, NY 11967, USA

**Quality Control  
Testing**



12.5% SDS-PAGE Stained with Coomassie Blue.

 Tel: 1-631-559-9269 1-516-512-3133

 Email: [info@creative-biomart.com](mailto:info@creative-biomart.com)  Fax: 1-631-938-8127

 45-1 Ramsey Road, Shirley, NY 11967, USA