

Recombinant Human CCDC69 Protein, GST-Tagged

Cat. No. CCDC69-0572H Lot. No. (See product label)

SPECIFICATION

Product Overview	Human CCDC69 full-length ORF (NP_056436.2, 1 a.a. - 296 a.a.) recombinant protein with GST-tag at N-terminal.
Species	Human
Source	Wheat Germ
Description	CCDC69 (Coiled-Coil Domain Containing 69) is a Protein Coding gene. An important paralog of this gene is MTUS1.
Molecular Mass	61.2 kDa
AA Sequence	<p>MGCRHSRLSSCKPPKKKRQEPEPEQPPRPEPHELGPLNGDTAITVQLCASEEAERH QKDITRILQQHEEEKKKWAQQVEKERELELRDLRDEQQRVLEGKNEEALQVLRASY EQEKEALTHSFREASSTQQETIDRLTSQLEAFQAKMKRVEESILSRNYKKHIQDYGS PSQFWEQELES LHFVIEMKNERIHEDRRLILMETVKEKNLILEEKITTLQQENEDLHV RSRNQVVLRSRQLSEDLTLLTREALEKEVQLRRQLQQEKEELLYRVLGANASPAFLAP VTPTEVSFLAT</p>
Applications	<p>Enzyme-linked Immunoabsorbent Assay Western Blot (Recombinant protein) Antibody Production Protein Array</p>
Storage	Store at -80 centigrade. Aliquot to avoid repeated freezing and thawing.

 Tel: 1-631-559-9269 1-516-512-3133

 Email: info@creative-biomart.com  Fax: 1-631-938-8127

 45-1 Ramsey Road, Shirley, NY 11967, USA

Storage Buffer 50 mM Tris-HCl, 10 mM reduced Glutathione, pH=8.0 in the elution buffer.

GENE INFORMATION

Gene Name CCDC69 coiled-coil domain containing 69 [Homo sapiens]

Official Symbol CCDC69

Synonyms CCDC69; coiled-coil domain containing 69; coiled-coil domain-containing protein 69; DKFZP434C171; FLJ13705; DKFZp434C171;

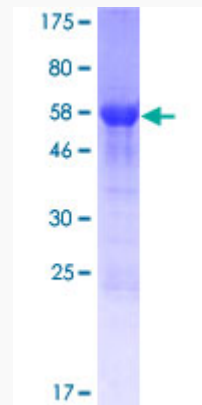
Gene ID 26112

mRNA Refseq NM_015621

Protein Refseq NP_056436

UniProt ID A6NI79

Quality Control Testing



12.5% SDS-PAGE Stained with Coomassie Blue.

 Tel: 1-631-559-9269 1-516-512-3133

 Email: info@creative-biomart.com  Fax: 1-631-938-8127

 45-1 Ramsey Road, Shirley, NY 11967, USA