

Recombinant Human CCDC83 Protein, Myc/DDK-tagged, C13 and N15-labeled

Cat. No. CCDC83-5618H Lot. No. (See product label)

SPECIFICATION

Product Overview	CCDC83 MS Standard C13 and N15-labeled recombinant protein (NP_775827) with a C-terminal MYC/DDK tag, was expressed in HEK293 cells.
Species	Human
Source	HEK293
Description	CCDC83 (Coiled-Coil Domain Containing 83) is a Protein Coding gene.
Molecular Mass	52.2 kDa
AA Sequence	MENSGKANKKDTHDGPPKEIKLPTSEALLDYQCQIKEDAVEQFMFQIKTLRKKKNQKY HERNSRLKEEQIWHIRHLLKELSEEKAEGLPVVTREDVEEAMKEKWKFERDQEKNL RDMRMQISNAEKLFLLEKSEKEYWEEYKNVGSERHAKLITSLQNDINTVKENAEKMS EHYKITLEDRKKIIEKTLQLDQKKEWATQNAVKLIDKGSYLEIWENDWLKKEVAIHR KEVEELKNAIHELEAENLVLIDQLSNCRVLKIPRYPVLHSCPTSNPRHLLLLPLESC LISARRCWRLYLTAAGLEVPPEEMSLELPETHIEEKSELQPTVEVESRDLMSSSDES TILHLSHENSIEDLQYVKIDKEENSGTEFGDMDKYLLEDEKDFDYVNLGPLGVKL MSVESKKMPIHFQEKEIPVKLYKDVRSPESHITYKMMKSFLTRTRPLEQKLISEEDLA ANDILDYKDDDDKV
Purity	> 80% as determined by SDS-PAGE and Coomassie blue staining
Stability	Stable for 3 months from receipt of products under proper storage and handling

 Tel: 1-631-559-9269 1-516-512-3133

 Email: info@creative-biomart.com  Fax: 1-631-938-8127

 45-1 Ramsey Road, Shirley, NY 11967, USA

conditions.

Storage Store at -80 centigrade. Avoid repeated freeze-thaw cycles.

Concentration 50 µg/mL as determined by BCA

Storage Buffer 100 mM glycine, 25 mM Tris-HCl, pH 7.3.

GENE INFORMATION

Gene Name [CCDC83 coiled-coil domain containing 83 \[Homo sapiens \(human\) \]](#)

Official Symbol [CCDC83](#)

Synonyms CCDC83; coiled-coil domain containing 83; coiled-coil domain-containing protein 83; FLJ42119; MGC34732; HSD9;

Gene ID [220047](#)

mRNA Refseq [NM_173556](#)

Protein Refseq [NP_775827](#)

UniProt ID [Q8IWF9](#)

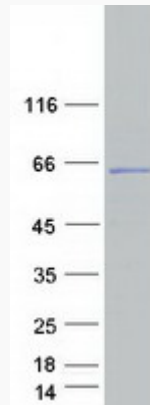
 Tel: 1-631-559-9269 1-516-512-3133

 Email: info@creative-biomart.com  Fax: 1-631-938-8127

 45-1 Ramsey Road, Shirley, NY 11967, USA



SDS-PAGE



Tel: 1-631-559-9269 1-516-512-3133

Email: info@creative-biomart.com Fax: 1-631-938-8127

45-1 Ramsey Road, Shirley, NY 11967, USA