

# Recombinant Human CCDC92 Protein, Myc/DDK-tagged, C13 and N15-labeled

**Cat. No.** CCDC92-2075H    **Lot. No.** (See product label)

## SPECIFICATION

|                         |   |
|-------------------------|---|
| <b>Product Overview</b> | CCDC92 MS Standard C13 and N15-labeled recombinant protein (NP_079416) with a C-terminal MYC/DDK tag, was expressed in HEK293 cells.  |
| <b>Species</b>          | Human   |
| <b>Source</b>           | HEK293  |
| <b>Description</b>      | CCDC92 (Coiled-Coil Domain Containing 92) is a Protein Coding gene. Diseases associated with CCDC92 include Lipodystrophy, Familial Partial, Type 1 and Senior-Loken Syndrome 1.  |
| <b>Molecular Mass</b>   | 37 kDa  |
| <b>AA Sequence</b>      | MTSPHFSSYDEGPLDVSM AATNLENQLHSAQKNLLFLQREHASTLKGLHSEIRRLQ<br>QHCTDLTYELTVKSSEQTGDGTSKSSSELKKRCEELEAQLKVKENENAELLKELEQKN<br>AMITVLENTIKEREKKYLEELKAKSHKLTLLSSELEQRASTIAYLTSQLHAAKKKLMSS<br>SGTSDASPSGSPVLASYKPAPPKDKLPETPRRRMKKSLSAPLHPEFEEVYRFGAES<br>RKLLLREPVDAMPDPTPFLLARESAEVHLIKERPLVIPPIASDRSGEQHSPAREKPHK<br>AHVGVVAHRIHHATPPQAQPEVKTLAVDQVNGGKVVRKHSGTDRTVTRTRPLEQKLI<br>SEEDLAANDILDYKDDDDKV |
| <b>Purity</b>           | > 80% as determined by SDS-PAGE and Coomassie blue staining   |
| <b>Stability</b>        | Stable for 3 months from receipt of products under proper storage and handling  |

 Tel: 1-631-559-9269    1-516-512-3133

 Email: [info@creative-biomart.com](mailto:info@creative-biomart.com)     Fax: 1-631-938-8127

 45-1 Ramsey Road, Shirley, NY 11967, USA

conditions.

**Storage** Store at -80 centigrade. Avoid repeated freeze-thaw cycles.

**Concentration** 50 µg/mL as determined by BCA

**Storage Buffer** 100 mM glycine, 25 mM Tris-HCl, pH 7.3.

## GENE INFORMATION

**Gene Name** [CCDC92 coiled-coil domain containing 92 \[ Homo sapiens \(human\) \]](#)

**Official Symbol** [CCDC92](#)

**Synonyms** CCDC92; coiled-coil domain containing 92; coiled-coil domain-containing protein 92; FLJ22471; limkain beta 2; limkain beta-2;

**Gene ID** [80212](#)

**mRNA Refseq** [NM\\_025140](#)

**Protein Refseq** [NP\\_079416](#)

**UniProt ID** [Q53HC0](#)

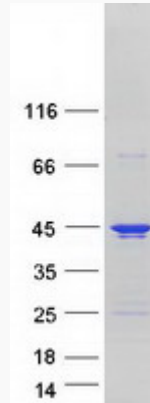
 Tel: 1-631-559-9269 1-516-512-3133

 Email: [info@creative-biomart.com](mailto:info@creative-biomart.com)  Fax: 1-631-938-8127

 45-1 Ramsey Road, Shirley, NY 11967, USA



SDS-PAGE



Tel: 1-631-559-9269 1-516-512-3133

Email: [info@creative-biomart.com](mailto:info@creative-biomart.com) Fax: 1-631-938-8127

45-1 Ramsey Road, Shirley, NY 11967, USA