

Recombinant Human CCDC93 Protein, GST-Tagged

Cat. No. CCDC93-0595H Lot. No. (See product label)

SPECIFICATION

Product Overview	Human CCDC93 full-length ORF (AAH93018.1, 1 a.a. - 631 a.a.) recombinant protein with GST-tag at N-terminal.
Species	Human
Source	Wheat Germ
Description	CCDC93 (Coiled-Coil Domain Containing 93) is a Protein Coding gene.
Molecular Mass	99.5 kDa
AA Sequence	<pre>MGLPRGPEGQGLPEVETREDEEQNVKLTEILLELLVAAGYFRARIKGLSPFDKVVGG MTWCITTCNFDVDVDLLFQENSTIGQKIALSEKIVSVLPRMKCPHQLEPHQIQGMDFI HIFPVVQWLVKRAIETKEEMGDYIRSYSVSQFQKTYSLPEDDDFIKRKEKAIKTVVDL SEVYKPCRKYKRHQGAEEELLDEESRIHATLLEYGRRYGFSRQSKMEKAEDKKTALP AGLSATEKADAHEEDELRAAEEQRIQSLMTKMTAMANEESRLTASSVGQIVGLCSA EIKQIVSEYAEKQSELSAEESPEKLGTSQLHRRKVISLNKQIAQKTKHLEELRASHTSL QARYNEAKKTLTELKTYSEKLDKEQAALKIESKADPSILQNLRALVAMNENLKSQEQ EFKAHCREEMTRLQQEIEENLKAERAPRGDEKTLSSGEPGTLTSAMTHDEDLDRRY NMEKEKLYKIRLLQARRNREIAILHRKIDEVPSRAELIQYQKRFIELYRQISAVHKETKQ FFTLYNTLDDKKVYLEKEISLLNSIHENFSQAMASPAARDQFLRQMEQIVEGIKQSRM KMEKKKQENKMRRDQLNDQYLELLEKQRLYFKTVKEFKEEGRKNEMLLSKVKAKAS</pre>
Applications	Enzyme-linked Immunoabsorbent Assay Western Blot (Recombinant protein)

 Tel: 1-631-559-9269 1-516-512-3133

 Email: info@creative-biomart.com  Fax: 1-631-938-8127

 45-1 Ramsey Road, Shirley, NY 11967, USA

Antibody Production
Protein Array

Storage Store at -80 centigrade. Aliquot to avoid repeated freezing and thawing.

Storage Buffer 50 mM Tris-HCl, 10 mM reduced Glutathione, pH=8.0 in the elution buffer.

GENE INFORMATION

Gene Name [CCDC93 coiled-coil domain containing 93 \[Homo sapiens \]](#)

Official Symbol [CCDC93](#)

Synonyms CCDC93; coiled-coil domain containing 93; coiled-coil domain-containing protein 93; FLJ10996; FLJ25197; MGC13033;

Gene ID [54520](#)

mRNA Refseq [NM_019044](#)

Protein Refseq [NP_061917](#)

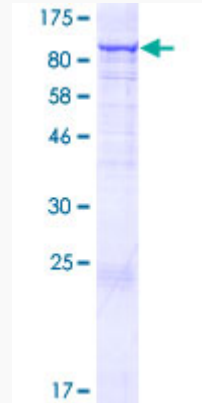
UniProt ID [Q567U6](#)

 Tel: 1-631-559-9269 1-516-512-3133

 Email: info@creative-biomart.com  Fax: 1-631-938-8127

 45-1 Ramsey Road, Shirley, NY 11967, USA

**Quality Control
Testing**



12.5% SDS-PAGE Stained with Coomassie Blue.

 Tel: 1-631-559-9269 1-516-512-3133

 Email: info@creative-biomart.com  Fax: 1-631-938-8127

 45-1 Ramsey Road, Shirley, NY 11967, USA