

Recombinant Human CCIN Protein, GST-Tagged

Cat. No. CCIN-0601H Lot. No. (See product label)

SPECIFICATION

Product Overview	Human CCIN full-length ORF (NP_005884.1, 1 a.a. - 588 a.a.) recombinant protein with GST-tag at N-terminal.
Species	Human
Source	Wheat Germ
Description	The protein encoded by this gene is a basic protein of the sperm head cytoskeleton. This protein contains kelch repeats and a BTB/POZ domain and is necessary for normal morphology during sperm differentiation. This gene is intronless. [provided by RefSeq, Jul 2008]
Molecular Mass	93.1 kDa
AA Sequence	<p>MKLEFTEKNYNSFVLQNLNRQRKRKEYWDMALSVDNHVFFAHRNVLAAVSPLVRSLS ISSNDMKTADLFIITDTSYLSPTVDQLLDYFYSGKVVISEQNVEELLRGAQYFNTPR LRVHCNDFLIKSICRANCLRYLFLAELFELKEVSDVAYSGIRDNFHYWASPEGSMHF MRCPPVIFGRLLRDENLHVLNEDQALSALINWVYFRKEDREKYFKKFFNYINLNAVS NKTLVFASNKLVGMENTSSHTTLIESVLMDRKQERPCSLLVYQRKGALLDSVVILGG QKAHGQFNDGVFAYIIQENLWMKLSDMPYRAAALSATSAGRYIYISGGTTEQISGLK TAWRYDMDDNSWTKLPDLPIGLVFHTMVTCCGGTVYVSGGSIAPRRYVSNIRYDER KEVWCLAGKMSIPMDGTAVITKGDRHLYIVTGRWLKGYISRGGVDCFDTSTGDV VQCITFPIEFNHRPLLSFQQDNILCVHSHRQSVEINLQKVKASKTTTTSPVLPNSCPL DVSHAICSIGDSKVFVCGGVTTASDVQTKDYTINPNAFLLDQKTGKWKTLAPPEAL</p>

 Tel: 1-631-559-9269 1-516-512-3133

 Email: info@creative-biomart.com  Fax: 1-631-938-8127

 45-1 Ramsey Road, Shirley, NY 11967, USA

DCPACCLAKLPCKILQRI

Applications

Enzyme-linked Immunoabsorbent Assay
 Western Blot (Recombinant protein)
 Antibody Production
 Protein Array

Storage

Store at -80 centigrade. Aliquot to avoid repeated freezing and thawing.

Storage Buffer

50 mM Tris-HCl, 10 mM reduced Glutathione, pH=8.0 in the elution buffer.

GENE INFORMATION

Gene Name

CCIN calicin [Homo sapiens]

Official Symbol

CCIN

Synonyms

CCIN; calicin; BTBD20; KBTBD14; calicin; testis tissue sperm-binding protein Li 65n

Gene ID

881

mRNA Refseq

NM_005893

Protein Refseq

NP_005884

MIM

603960

UniProt ID

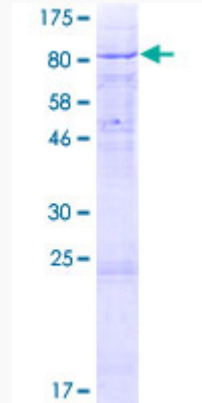
Q13939

 Tel: 1-631-559-9269 1-516-512-3133

 Email: info@creative-biomart.com  Fax: 1-631-938-8127

 45-1 Ramsey Road, Shirley, NY 11967, USA

**Quality Control
Testing**



12.5% SDS-PAGE Stained with Coomassie Blue.

 Tel: 1-631-559-9269 1-516-512-3133

 Email: info@creative-biomart.com  Fax: 1-631-938-8127

 45-1 Ramsey Road, Shirley, NY 11967, USA