

Recombinant Human CCK Protein, GST-Tagged

Cat. No. CCK-0602H **Lot. No.** (See product label)

SPECIFICATION

Product Overview	Human CCK full-length ORF (AAH08283, 1 a.a. - 115 a.a.) recombinant protein with GST-tag at N-terminal.
Species	Human
Source	Wheat Germ
Description	This gene encodes a member of the gastrin/cholecystokinin family of proteins. The encoded preproprotein is proteolytically processed to generate multiple protein products, including the peptide hormones cholecystokinin-8, -12, -33, and others. The encoded peptides have been shown to regulate gastric acid secretion and food intake. A sulfated form of cholecystokinin-8 may modulate neuronal activity in the brain. Alternative splicing results in multiple transcript variants. [provided by RefSeq, Nov 2015]
Molecular Mass	38.39 kDa
AA Sequence	MNSGVCLCVLMAVLAAGALTQPVPADPAGSGLQRAEEAPRRQLRVSQRTDGESR AHLGALLARYIQQARKAPSGRMSIVKNLQNLDPShRISDRDYMGMDFGRRSAEEY EYPS
Applications	Enzyme-linked Immunoabsorbent Assay Western Blot (Recombinant protein) Antibody Production Protein Array

 Tel: 1-631-559-9269 1-516-512-3133

 Email: info@creative-biomart.com  Fax: 1-631-938-8127

 45-1 Ramsey Road, Shirley, NY 11967, USA

Storage Store at -80 centigrade. Aliquot to avoid repeated freezing and thawing.

Storage Buffer 50 mM Tris-HCl, 10 mM reduced Glutathione, pH=8.0 in the elution buffer.

GENE INFORMATION

Gene Name CCK cholecystokinin [Homo sapiens]

Official Symbol CCK

Synonyms CCK; cholecystokinin; MGC117187;

Gene ID 885

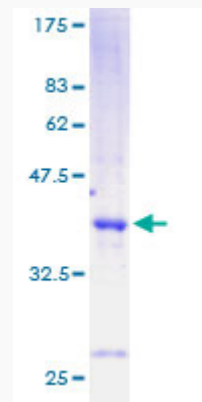
mRNA Refseq NM_000729

Protein Refseq NP_000720

MIM 118440

UniProt ID P06307

Quality Control Testing



Tel: 1-631-559-9269 1-516-512-3133

Email: info@creative-biomart.com Fax: 1-631-938-8127

45-1 Ramsey Road, Shirley, NY 11967, USA



12.5% SDS-PAGE Stained with Coomassie Blue.

 Tel: 1-631-559-9269 1-516-512-3133

 Email: info@creative-biomart.com  Fax: 1-631-938-8127

 45-1 Ramsey Road, Shirley, NY 11967, USA