

Recombinant Human CCL1 protein(24-96aa), MBP&His-Avi-tagged, Biotinylated

Cat. No. CCL1-1168H Lot. No. (See product label)

SPECIFICATION

| | |
|--------------------------|--|
| Product Overview | Biotinylated Recombinant Human CCL1 protein(P22362)(24-96aa), fused with N-terminal MBP tag and C-terminal His and Avi tag, was expressed in E.coli. |
| Species | Human |
| Source | E.coli |
| ProteinLength | 24-96aa |
| Conjugation/Label | Biotin |
| Form | If the delivery form is liquid, the default storage buffer is Tris/PBS-based buffer, 5%-50% glycerol. If the delivery form is lyophilized powder, the buffer before lyophilization is Tris/PBS-based buffer, 6% Trehalose, pH 8.0. |
| Molecular Mass | 56.3 kDa |
| Purity | Greater than 85% as determined by SDS-PAGE. |
| Storage | Store at -20°C/-80°C upon receipt, aliquoting is necessary for mutiple use. Avoid repeated freeze-thaw cycles. |
| Reconstitution | We recommend that this vial be briefly centrifuged prior to opening to bring the contents to the bottom. Please reconstitute protein in deionized sterile water to a |

 Tel: 1-631-559-9269 1-516-512-3133

 Email: info@creative-biomart.com  Fax: 1-631-938-8127

 45-1 Ramsey Road, Shirley, NY 11967, USA

concentration of 0.1-1.0 mg/mL. We recommend to add 5-50% of glycerol (final concentration) and aliquot for long-term storage at -20°C/-80°C.

AA Sequence KSMQVPFSRCCFSFAEQEIPLRAILCYRNTSSICSNEGLIFKLKRGKEACALDTVGVV
QRHRKMLRHCP SKRK

Conjugation Biotin

GENE INFORMATION

Gene Name CCL1 chemokine (C-C motif) ligand 1 [Homo sapiens]

Official Symbol CCL1

Synonyms CCL1; chemokine (C-C motif) ligand 1; SCYA1, small inducible cytokine A1 (I 309, homologous to mouse Tca 3); C-C motif chemokine 1; I 309; inflammatory cytokine I 309; P500; SISE; T lymphocyte secreted protein I 309; TCA3; inflammatory cytokine I-309; small-inducible cytokine A1; T lymphocyte-secreted protein I-309; small inducible cytokine A1 (I-309, homologous to mouse Tca-3); I-309; SCYA1;

Gene ID 6346

mRNA Refseq NM_002981

Protein Refseq NP_002972

MIM 182281

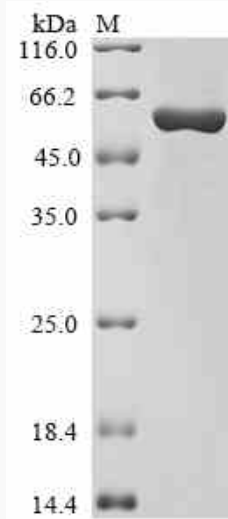
UniProt ID P22362

 Tel: 1-631-559-9269 1-516-512-3133

 Email: info@creative-biomart.com  Fax: 1-631-938-8127

 45-1 Ramsey Road, Shirley, NY 11967, USA

SDS-PAGE



 Tel: 1-631-559-9269 1-516-512-3133

 Email: info@creative-biomart.com  Fax: 1-631-938-8127

 45-1 Ramsey Road, Shirley, NY 11967, USA