

## Recombinant Human CCL1, hFc-tagged

Cat. No. CCL1-19H Lot. No. (See product label)

### SPECIFICATION

<b>Product Overview</b>	Recombinant Human CCL1(NP_002972.1) (Lys 24-Lys 96) was expressed in Human Cells, fused with the Fc region of human IgG1 at the N-terminus.
<b>Species</b>	Human
<b>Source</b>	Human Cells
<b>ProteinLength</b>	24-96 aa
<b>Form</b>	Lyophilized from sterile PBS, pH 7.4.
<b>Molecular Mass</b>	The recombinant human Fc/CCL1 is a disulfide-linked homodimeric protein. The reduced monomer consists of 310 amino acids and predicts a molecular mass of 35 kDa. As a result of glycosylation, the rhCCL1/Fc monomer migrates as an approximately 38-42 kDa band in SDS-PAGE under reducing conditions.
<b>Endotoxin</b>	< 1.0 EU per µg of the protein as determined by the LAL method.
<b>Purity</b>	> 90 % as determined by SDS-PAGE
<b>Storage</b>	Store it under sterile conditions at -20°C to -80°C upon receiving. Recommend to aliquot the protein into smaller quantities for optimal storage. Avoid repeated freeze-thaw cycles.
<b>Reconstitution</b>	It is recommended that sterile water be added to the vial to prepare a stock solution of

 Tel: 1-631-559-9269 1-516-512-3133

 Email: [info@creative-biomart.com](mailto:info@creative-biomart.com)  Fax: 1-631-938-8127

 45-1 Ramsey Road, Shirley, NY 11967, USA

0.2 ug/ul. Centrifuge the vial at 4°C before opening to recover the entire contents.

## GENE INFORMATION

**Gene Name** CCL1 chemokine (C-C motif) ligand 1 [ Homo sapiens ]

**Official Symbol** CCL1

**Synonyms** CCL1; chemokine (C-C motif) ligand 1; SCYA1, small inducible cytokine A1 (I 309, homologous to mouse Tca 3); C-C motif chemokine 1; I 309; inflammatory cytokine I 309; P500; SISE; T lymphocyte secreted protein I 309; TCA3; inflammatory cytokine I-309; small-inducible cytokine A1; T lymphocyte-secreted protein I-309; small inducible cytokine A1 (I-309, homologous to mouse Tca-3); I-309; SCYA1;

**Gene ID** 6346

**mRNA Refseq** NM\_002981

**Protein Refseq** NP\_002972

**MIM** 182281

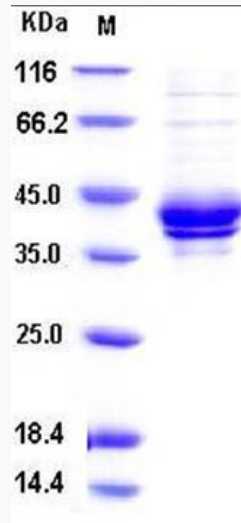
**UniProt ID** P22362

 Tel: 1-631-559-9269 1-516-512-3133

 Email: [info@creative-biomart.com](mailto:info@creative-biomart.com)  Fax: 1-631-938-8127

 45-1 Ramsey Road, Shirley, NY 11967, USA

**SDS-PAGE**



 Tel: 1-631-559-9269 1-516-512-3133

 Email: [info@creative-biomart.com](mailto:info@creative-biomart.com)  Fax: 1-631-938-8127

 45-1 Ramsey Road, Shirley, NY 11967, USA