

Recombinant Human CCL1 Protein

Cat. No. CCL1-30H Lot. No. (See product label)

SPECIFICATION

Product Overview	Recombinant Human CCL1 Protein(P22362) (Lys24-Lys96) was expressed in E.coli, with a N-terminal Met.
Species	Human
Source	E.coli
ProteinLength	24-96 aa
Form	Lyophilized from sterile 40% acetonitrile, 0.1% TFA, 20% H2O.
Molecular Mass	The recombinant human CCL1 consists of 75 amino acids and predicts a molecular mass of 8.7 KDa. It migrates as an approximately 9 KDa band in SDS-PAGE under reducing conditions.
Purity	> 95 % as determined by SDS-PAGE
Storage	Store it under sterile conditions at -20°C to -80°C upon receiving. Recommend to aliquot the protein into smaller quantities for optimal storage. Avoid repeated freeze-thaw cycles.
Reconstitution	It is recommended that sterile water be added to the vial to prepare a stock solution of 0.2 ug/ul. Centrifuge the vial at 4°C before opening to recover the entire contents.

GENE INFORMATION

 Tel: 1-631-559-9269 1-516-512-3133

 Email: info@creative-biomart.com  Fax: 1-631-938-8127

 45-1 Ramsey Road, Shirley, NY 11967, USA

Gene Name	CCL1 chemokine (C-C motif) ligand 1 [Homo sapiens]
Official Symbol	CCL1
Synonyms	CCL1; chemokine (C-C motif) ligand 1; SCYA1, small inducible cytokine A1 (I 309, homologous to mouse Tca 3); C-C motif chemokine 1; I 309; inflammatory cytokine I 309; P500; SISE; T lymphocyte secreted protein I 309; TCA3; inflammatory cytokine I-309; small-inducible cytokine A1; T lymphocyte-secreted protein I-309; small inducible cytokine A1 (I-309, homologous to mouse Tca-3); I-309; SCYA1;
Gene ID	6346
mRNA Refseq	NM_002981
Protein Refseq	NP_002972
MIM	182281
UniProt ID	P22362

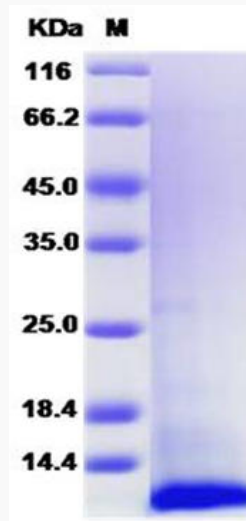
 Tel: 1-631-559-9269 1-516-512-3133

 Email: info@creative-biomart.com  Fax: 1-631-938-8127

 45-1 Ramsey Road, Shirley, NY 11967, USA



SDS-PAGE



Tel: 1-631-559-9269 1-516-512-3133

Email: info@creative-biomart.com Fax: 1-631-938-8127

45-1 Ramsey Road, Shirley, NY 11967, USA