

Recombinant Human CCL1 protein

Cat. No. CCL1-605H **Lot. No.** (See product label)

SPECIFICATION

Product Overview	Recombinant Human CCL1 protein was expressed in Escherichia coli.
Species	Human
Source	E.coli
ProteinLength	74
Description	Chemokine (C-C motif) ligand 1 (CCL1) belongs to a family inflammatory cytokines and also known as chemokines. It is a small glycoprotein secreted by activated T cells with a molecular weight of approximately 8.5 kDa. CCL1 attracts monocytes, NK cells, and immature B cells and dendritic cells by interacting with a cell surface chemokine receptor called CCR8. Human CCL1 has been assumed to be a homologue of the mouse TCA3. While the two proteins share only approximately 42 % amino acid sequence identity, both chemokines contain an extra pair of cysteine residues not found in most other chemokines.
Form	Lyophilized from a 0.2µm filtered concentrated solution in 20 mM PB, pH 7.4, 100 mM NaCl.
Bio-activity	Fully biologically active when compared to standard. The biological activity determined by a chemotaxis bioassay using human T-lymphocytes is in a concentration range of 10-100 ng/ml.
Molecular Mass	Approximately 8.6 kDa, a single, non-glycosylated polypeptide chain containing 74

 Tel: 1-631-559-9269 1-516-512-3133

 Email: info@creative-biomart.com  Fax: 1-631-938-8127

 45-1 Ramsey Road, Shirley, NY 11967, USA

	amino acids.
AA Sequence	SKSMQVPFSRCCFSFAEQEIPLRAILCYRNTSSICSNEGLIFKLKRGKEACALDTVGW VQRHRKMLRHCP SKRK
Endotoxin	Less than 1 EU/μg of rHuI-309/CCL1 as determined by LAL method.
Purity	>97% by SDS-PAGE and HPLC analysis.
Storage	Use a manual defrost freezer and avoid repeated freeze-thaw cycles. 12 months from date of receipt, -20 to -70 centigrade as supplied. 1 month, 2 to 8 centigrade under sterile conditions after reconstitution. 3 months, -20 to -70 centigrade under sterile conditions after reconstitution.
Reconstitution	We recommend that this vial be briefly centrifuged prior to opening to bring the contents to the bottom. Reconstitute in sterile distilled water or aqueous buffer containing 0.1 % BSA to a concentration of 0.1-1.0 mg/mL. Stock solutions should be apportioned into working aliquots and stored at ≤-20 centigrade. Further dilutions should be made in appropriate buffered solutions.

GENE INFORMATION

Gene Name	CCL1
Official Symbol	CCL1
Synonyms	CCL1; chemokine (C-C motif) ligand 1; SCYA1, small inducible cytokine A1 (I 309, homologous to mouse Tca 3); C-C motif chemokine 1; I 309; inflammatory cytokine I 309; P500; SISE; T lymphocyte secreted protein I 309; TCA3; inflammatory cytokine I-309; small-inducible cytokine A1; T lymphocyte-secreted protein I-309; small inducible cytokine A1 (I-309, homologous to mouse Tca-3); I-309; SCYA1;

 Tel: 1-631-559-9269 1-516-512-3133

 Email: info@creative-biomart.com  Fax: 1-631-938-8127

 45-1 Ramsey Road, Shirley, NY 11967, USA

Gene ID 6346

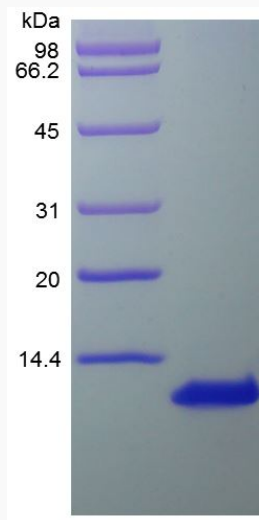
mRNA Refseq NM_002981

Protein Refseq NP_002972

MIM 182281

UniProt ID P22362

SDS-PAGE of CCL1-605H



 Tel: 1-631-559-9269 1-516-512-3133

 Email: info@creative-biomart.com  Fax: 1-631-938-8127

 45-1 Ramsey Road, Shirley, NY 11967, USA