

Active Recombinant Human CCL11 protein

Cat. No. CCL11-3564H Lot. No. (See product label)

SPECIFICATION

Product Overview	Active Recombinant Human CCL11 protein(P51671)(24-97 aa) was expressed in E.coli.
Species	Human
Source	E.coli
ProteinLength	24-97 aa
Form	Lyophilized from a 0.2 µm filtered concentrated solution in 20 mM PB, pH 7.4, 150 mM NaCl.
Bio-activity	Fully biologically active when compared to standard. The biological activity determined by a chemotaxis bioassay using human peripheral blood eosinophils is in a concentration range of 0.1-10.0 ng/ml.
Molecular Mass	Approximately 8.4 kDa, a single non-glycosylated polypeptide chain containing 74 amino acids.
AASequence	GPASVPTTCC FNLANRKIPL QRLESYRRIT SGKCPQKAVI FKTKLAKDIC ADPKKKWVQD SMKYLDQKSP TPKP
Endotoxin	Less than 1 EU/µg of rHuEotaxin/CCL11 as determined by LAL method.
Purity	>97% by SDS-PAGE and HPLC analyses.

 Tel: 1-631-559-9269 1-516-512-3133

 Email: info@creative-biomart.com  Fax: 1-631-938-8127

 45-1 Ramsey Road, Shirley, NY 11967, USA

Storage

Use a manual defrost freezer and avoid repeated freeze-thaw cycles. - 12 months from date of receipt, -20 to -70 °C as supplied. - 1 month, 2 to 8 °C under sterile conditions after reconstitution. - 3 months, -20 to -70 °C under sterile conditions after reconstitution.

Reconstitution

We recommend that this vial be briefly centrifuged prior to opening to bring the contents to the bottom. Reconstitute in sterile distilled water or aqueous buffer containing 0.1 % BSA to a concentration of 0.1-1.0 mg/mL. Stock solutions should be apportioned into working aliquots and stored at ≤ -20 °C. Further dilutions should be made in appropriate buffered solutions.

GENE INFORMATION

Gene Name

[CCL11 chemokine \(C-C motif\) ligand 11 \[Homo sapiens \]](#)

Official Symbol

[CCL11](#)

Synonyms

CCL11; chemokine (C-C motif) ligand 11; SCYA11, small inducible cytokine subfamily A (Cys Cys), member 11 (eotaxin); eotaxin; eotaxin 1; MGC22554; eotaxin-1; C-C motif chemokine 11; small-inducible cytokine A11; eosinophil chemotactic protein; small inducible cytokine subfamily A (Cys-Cys), member 11 (eotaxin); SCYA11;

Gene ID

[6356](#)

mRNA Refseq

[NM_002986](#)

Protein Refseq

[NP_002977](#)

MIM

[601156](#)

UniProt ID

[P51671](#)

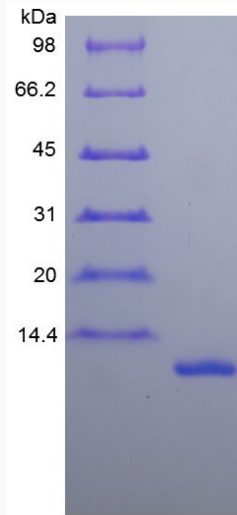
 Tel: 1-631-559-9269 1-516-512-3133

 Email: info@creative-biomart.com  Fax: 1-631-938-8127

 45-1 Ramsey Road, Shirley, NY 11967, USA



SDS-PAGE



Tel: 1-631-559-9269 1-516-512-3133

Email: info@creative-biomart.com Fax: 1-631-938-8127

45-1 Ramsey Road, Shirley, NY 11967, USA