

Recombinant Cattle CCL11 protein, His & T7-tagged

Cat. No. CCL11-593C **Lot. No.** (See product label)

SPECIFICATION

Product Overview	Recombinant Cattle CCL11 (Q9TTS6) aa. (Gln24~Ser97) fused with N-terminal His & T7 tag was produced in E. coli cells.
Species	Cattle
Source	E.coli
ProteinLength	Gln24~Ser97
Form	Freeze-dried powder
Molecular Mass	Predicted Molecular Mass: 12.3kDa
Endotoxin	<1.0EU per 1g (determined by the LAL method)
Purity	> 95%
Characteristic	The isoelectric point is 9.9.
Applications	SDS-PAGE; WB; ELISA; IP.
Stability	The thermal stability is described by the loss rate. The loss rate was determined by accelerated thermal degradation test, that is, incubate the protein at 37°C for 48h, and no obvious degradation and precipitation were observed. The loss rate is less than 5% within the expiration date under appropriate storage condition.

 Tel: 1-631-559-9269 1-516-512-3133

 Email: info@creative-biomart.com  Fax: 1-631-938-8127

 45-1 Ramsey Road, Shirley, NY 11967, USA

Storage	Avoid repeated freeze/thaw cycles. Store at 2-8°C for one month. Aliquot and store at -80°C for 12 months.
Storage buffer	PBS, pH7.4, containing 5% sucrose, 0.01% sarcosyl.
Reconstitution	Reconstitute in sterile PBS, pH7.2-pH7.4

GENE INFORMATION

Gene Name	CCL11 chemokine (C-C motif) ligand 11 [<i>Bos taurus</i> (cattle)]
Official Symbol	CCL11
Synonyms	CCL11; chemokine (C-C motif) ligand 11; eotaxin; C-C motif chemokine 11; small-inducible cytokine A11
Gene ID	404072
mRNA Refseq	NM_205773.2
Protein Refseq	NP_991342.1
UniProt ID	Q9TTS6

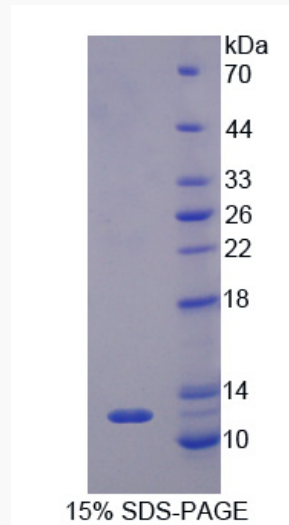
 Tel: 1-631-559-9269 1-516-512-3133

 Email: info@creative-biomart.com  Fax: 1-631-938-8127

 45-1 Ramsey Road, Shirley, NY 11967, USA



SDS-PAGE



Tel: 1-631-559-9269 1-516-512-3133

Email: info@creative-biomart.com Fax: 1-631-938-8127

45-1 Ramsey Road, Shirley, NY 11967, USA