

## Recombinant Human CCL13 protein

Cat. No. CCL13-195H Lot. No. (See product label)

### SPECIFICATION

<b>Product Overview</b>	Recombinant Human CCL13 was expressed in E. coli.
<b>Species</b>	Human
<b>Source</b>	E.coli
<b>Form</b>	Lyophilized from a 0.2 µm filtered solution in PB, 100mM NaCl, pH 7.5
<b>Molecular Mass</b>	9.0 kDa
<b>Endotoxin</b>	<1.0 EU/µg of recombinant protein as determined by the LAL method.
<b>Purity</b>	95%
<b>Applications</b>	Cell Assay
<b>Storage</b>	The lyophilized protein is stable for at least one year from date of receipt at -70 centigrade. Upon reconstitution, this cytokine can be stored in working aliquots at 2 centigrade- 8 centigrade for one month, or at -20 centigrade for six months, with a carrier protein without detectable loss of activity. Avoid repeated freeze/thaw cycles.
<b>Reconstitution</b>	A quick spin of the vial followed by reconstitution in distilled water to a concentration not less than 0.1 mg/mL. This solution can then be diluted into other buffers.

### GENE INFORMATION

 Tel: 1-631-559-9269 1-516-512-3133

 Email: [info@creative-biomart.com](mailto:info@creative-biomart.com)  Fax: 1-631-938-8127

 45-1 Ramsey Road, Shirley, NY 11967, USA

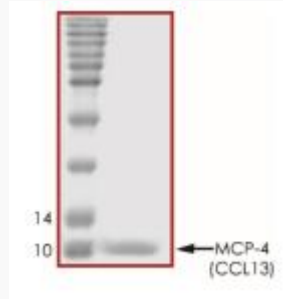


<b>Gene Name</b>	CCL13 chemokine (C-C motif) ligand 13 [ Homo sapiens ]
<b>Official Symbol</b>	CCL13
<b>Synonyms</b>	CCL13; chemokine (C-C motif) ligand 13; SCYA13, small inducible cytokine subfamily A (Cys Cys), member 13; C-C motif chemokine 13; CKb10; MCP 4; MGC17134; NCC 1; SCYL1; CK-beta-10; new CC chemokine 1; small-inducible cytokine A13; monocyte chemotactic protein 4; monocyte chemoattractant protein 4; small inducible cytokine subfamily A (Cys-Cys), member 13; NCC1; MCP-4; NCC-1; SCYA13;
<b>Gene ID</b>	6357
<b>mRNA Refseq</b>	NM_005408
<b>Protein Refseq</b>	NP_005399
<b>MIM</b>	601391
<b>UniProt ID</b>	Q99616
<b>Chromosome Location</b>	17q11.2
<b>Pathway</b>	Chemokine signaling pathway, organism-specific biosystem; Chemokine signaling pathway, conserved biosystem; Cytokine-cytokine receptor interaction, organism-specific biosystem; Cytokine-cytokine receptor interaction, conserved biosystem;
<b>Function</b>	chemokine activity; receptor binding;

Tel: 1-631-559-9269 1-516-512-3133

Email: [info@creative-biomart.com](mailto:info@creative-biomart.com) Fax: 1-631-938-8127

45-1 Ramsey Road, Shirley, NY 11967, USA



Tel: 1-631-559-9269 1-516-512-3133

Email: [info@creative-biomart.com](mailto:info@creative-biomart.com) Fax: 1-631-938-8127

45-1 Ramsey Road, Shirley, NY 11967, USA