

Recombinant Human CCL13 Protein, His/GST-tagged

Cat. No. CCL13-221H **Lot. No.** (See product label)

SPECIFICATION

Product Overview	Recombinant Human CCL13(Gln24~Thr98) fused with His/GST tag at N-terminal was expressed in E. coli.
Species	Human
Source	E.coli
ProteinLength	Gln24~Thr98
Description	This antimicrobial gene is one of several Cys-Cys (CC) cytokine genes clustered on the q-arm of chromosome 17. Cytokines are a family of secreted proteins involved in immunoregulatory and inflammatory processes. The CC cytokines are proteins characterized by two adjacent cysteines. The cytokine encoded by this gene displays chemotactic activity for monocytes, lymphocytes, basophils and eosinophils, but not neutrophils. This chemokine plays a role in accumulation of leukocytes during inflammation. It may also be involved in the recruitment of monocytes into the arterial wall during atherosclerosis.
Form	PBS, pH7.4, containing 0.01% SKL, 1mM DTT, 5% Trehalose and Proclin300.
Molecular Mass	41.0kDa
Identity	Reconstitute in PBS or others
Endotoxin	<1.0EU per 1g (determined by the LAL method)

 Tel: 1-631-559-9269 1-516-512-3133

 Email: info@creative-biomart.com  Fax: 1-631-938-8127

 45-1 Ramsey Road, Shirley, NY 11967, USA

Purity	> 95%
Applications	Positive Control; Immunogen; SDS-PAGE; WB. If bio-activity of the protein is needed, please check active protein
Stability	The thermal stability is described by the loss rate. The loss rate was determined by accelerated thermal degradation test, that is, incubate the protein at 37 centigrade for 48h, and no obvious degradation and precipitation were observed. The loss rate is less than 5% within the expiration date under appropriate storage condition.
Storage	Avoid repeated freeze/thaw cycles. Store at 2-8 centigrade for one month. Aliquot and store at -80 centigrade for 12 months.
Reconstitution	Reconstitute in PBS or others

GENE INFORMATION

Gene Name	CCL13 chemokine (C-C motif) ligand 13 [Homo sapiens]
Official Symbol	CCL13
Synonyms	CCL13; chemokine (C-C motif) ligand 13; SCYA13, small inducible cytokine subfamily A (Cys Cys), member 13; C-C motif chemokine 13; CKb10; MCP 4; MGC17134; NCC 1; SCYL1; CK-beta-10; new CC chemokine 1; small-inducible cytokine A13; monocyte chemotactic protein 4; monocyte chemoattractant protein 4; small inducible cytokine subfamily A (Cys-Cys), member 13; NCC1; MCP-4; NCC-1; SCYA13;
Gene ID	6357
mRNA Refseq	NM_005408

 Tel: 1-631-559-9269 1-516-512-3133

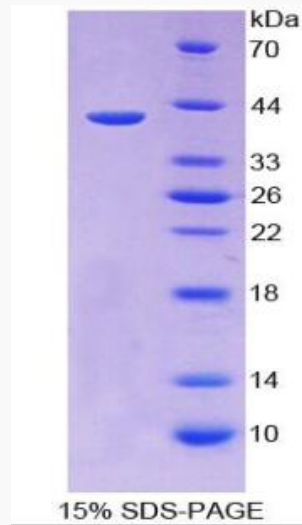
 Email: info@creative-biomart.com  Fax: 1-631-938-8127

 45-1 Ramsey Road, Shirley, NY 11967, USA

Protein Refseq NP_005399

MIM 601391

UniProt ID Q99616



 Tel: 1-631-559-9269 1-516-512-3133

 Email: info@creative-biomart.com  Fax: 1-631-938-8127

 45-1 Ramsey Road, Shirley, NY 11967, USA