

Recombinant Human CCL13 protein, His-tagged

Cat. No. CCL13-241H Lot. No. (See product label)

SPECIFICATION

Product Overview	Recombinant Human CCL13 protein(NP_005399.1) (Gln24-Thr98) was expressed in Yeast with a polyhistidine tag at the C-terminus.
Species	Human
Source	Yeast
ProteinLength	24-98 aa
Form	Lyophilized from sterile PBS, pH 7.4.
Molecular Mass	The recombinant human CCL13 consists of 85 amino acids and predicts a molecular mass of 10 KDa. It migrates as an approximately 14 KDa band in SDS-PAGE under reducing conditions.
Purity	> 95 % as determined by SDS-PAGE
Storage	Store it under sterile conditions at -20°C to -80°C upon receiving. Recommend to aliquot the protein into smaller quantities for optimal storage. Avoid repeated freeze-thaw cycles.
Reconstitution	It is recommended that sterile water be added to the vial to prepare a stock solution of 0.2 ug/ul. Centrifuge the vial at 4°C before opening to recover the entire contents.

GENE INFORMATION

 Tel: 1-631-559-9269 1-516-512-3133

 Email: info@creative-biomart.com  Fax: 1-631-938-8127

 45-1 Ramsey Road, Shirley, NY 11967, USA

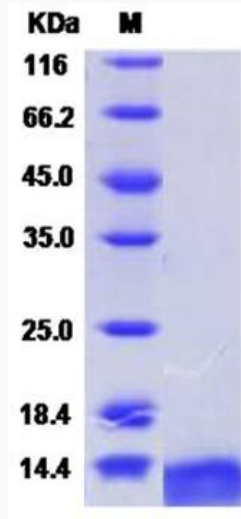
Gene Name	CCL13 chemokine (C-C motif) ligand 13 [Homo sapiens]
Official Symbol	CCL13
Synonyms	CCL13; chemokine (C-C motif) ligand 13; SCYA13, small inducible cytokine subfamily A (Cys Cys), member 13; C-C motif chemokine 13; CKb10; MCP 4; MGC17134; NCC 1; SCYL1; CK-beta-10; new CC chemokine 1; small-inducible cytokine A13; monocyte chemotactic protein 4; monocyte chemoattractant protein 4; small inducible cytokine subfamily A (Cys-Cys), member 13; NCC1; MCP-4; NCC-1; SCYA13;
Gene ID	6357
mRNA Refseq	NM_005408
Protein Refseq	NP_005399
MIM	601391
UniProt ID	Q99616

 Tel: 1-631-559-9269 1-516-512-3133

 Email: info@creative-biomart.com  Fax: 1-631-938-8127

 45-1 Ramsey Road, Shirley, NY 11967, USA

SDS-PAGE



 Tel: 1-631-559-9269 1-516-512-3133

 Email: info@creative-biomart.com  Fax: 1-631-938-8127

 45-1 Ramsey Road, Shirley, NY 11967, USA