

Active Recombinant Human CCL13 protein, His-tagged

Cat. No. CCL13-432H **Lot. No.** (See product label)

SPECIFICATION

Product Overview	Active Recombinant Human CCL13 protein(Q99616)(17~98 aa), fused with N-terminal His tag, was expressed in Yeast.
Species	Human
Source	Yeast
ProteinLength	17-98 aa
Form	Lyophilized from sterile 20mM Tris, 150mM NaCl, pH8.0, containing 1mM EDTA, 1mM DTT, 0.01% SKL, 5% Trehalose and Proclin300.
Bio-activity	CCL13 (C-C motif chemokine 13) is a chemotactic factor that attracts monocytes, lymphocytes, basophils and eosinophils, which belongs to the CC chemokine subfamily. It has been reported that CCL13 can induce chemotactic migration of THP-1 cells. Therefore, chemotaxis assay used 24-well microchemotaxis system was undertaken to detect the chemotactic effect of CCL13 on the human monocytic cell line THP-1. Briefly, THP-1 cells were seeded into the upper chambers (100 μ cell suspension, 10 ⁶ cells/mL in RPMI 1640 with 0.5% FBS) and CCL13 (50ng/mL and 100ng/mL diluted separately in serum free RPMI 1640) was added in lower chamber with a polycarbonate filter (8 μ m pore size) used to separate the two compartments. After incubation at 37°C with 5% CO ₂ for 3h, the filter was removed, then cells in low chamber were observed by inverted microscope at low magnification (×100) and the number of migrated cells were counted at high magnification (×400) randomly (five

 Tel: 1-631-559-9269 1-516-512-3133

 Email: info@creative-biomart.com  Fax: 1-631-938-8127

 45-1 Ramsey Road, Shirley, NY 11967, USA

fields for each filter). CCL13 is able to induce migration of THP-1 cells. The migrated THP-1 cells in low chamber at low magnification (×100). Five fields of each chamber were randomly chosen to count the migrated cells at high magnification (×400).

Molecular Mass	10.7kDa
Endotoxin	<1.0EU per 1µg (determined by the LAL method).
Purity	> 95% as determined by SDS-PAGE.
Storage	Avoid repeated freeze/thaw cycles. Store at -20°C for 12 months. Aliquot and store at -80°C for 12 months.
Reconstitution	Reconstitute in 20mM Tris, 150mM NaCl (PH8.0) to a concentration of 0.1-1.0 mg/mL. Do not vortex.

GENE INFORMATION

Gene Name	CCL13 chemokine (C-C motif) ligand 13 [Homo sapiens]
Official Symbol	CCL13
Synonyms	CCL13; chemokine (C-C motif) ligand 13; SCYA13, small inducible cytokine subfamily A (Cys Cys), member 13; C-C motif chemokine 13; CKb10; MCP 4; MGC17134; NCC 1; SCYL1; CK-beta-10; new CC chemokine 1; small-inducible cytokine A13; monocyte chemotactic protein 4; monocyte chemoattractant protein 4; small inducible cytokine subfamily A (Cys-Cys), member 13; NCC1; MCP-4; NCC-1; SCYA13;
Gene ID	6357
mRNA Refseq	NM_005408

 Tel: 1-631-559-9269 1-516-512-3133

 Email: info@creative-biomart.com  Fax: 1-631-938-8127

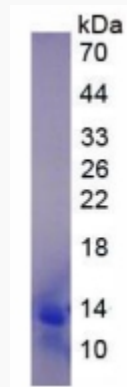
 45-1 Ramsey Road, Shirley, NY 11967, USA

Protein Refseq NP_005399

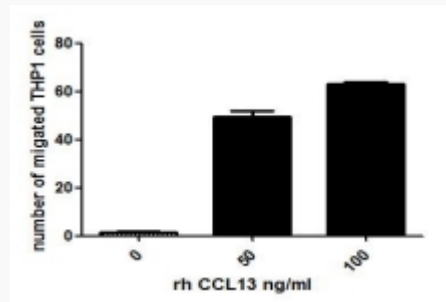
MIM 601391

UniProt ID Q99616

SDS-PAGE



Activity



 Tel: 1-631-559-9269 1-516-512-3133

 Email: info@creative-biomart.com  Fax: 1-631-938-8127

 45-1 Ramsey Road, Shirley, NY 11967, USA