

# Recombinant Human CCL14 Protein (Thr20-Asn93), C-His tagged

Cat. No. CCL14-1309H    Lot. No. (See product label)

## SPECIFICATION

<b>Product Overview</b>	Recombinant human CCL14 (Thr20-Asn93) fused with the C-terminal His tag was expressed in Mammalian cells.
<b>Species</b>	Human
<b>Source</b>	Mammalian Cells
<b>ProteinLength</b>	Thr20-Asn93
<b>Form</b>	Lyophilized powder/frozen liquid
<b>Molecular Mass</b>	8.14 kDa
<b>Purity</b>	>90% as determined by SDS-PAGE.
<b>Notes</b>	For research use only.
<b>Storage</b>	Use a manual defrost freezer and avoid repeated freeze thaw cycles. Store at 2 to 8 centigrade for one week. Store at -20 to -80 centigrade for twelve months from the date of receipt.
<b>Storage Buffer</b>	Supplied as solution form in PBS or lyophilized from PBS.
<b>Reconstitution</b>	Reconstitute in sterile water for a stock solution.

 Tel: 1-631-559-9269    1-516-512-3133

 Email: [info@creative-biomart.com](mailto:info@creative-biomart.com)     Fax: 1-631-938-8127

 45-1 Ramsey Road, Shirley, NY 11967, USA

**Shipping** They are shipped out with dry ice/blue ice unless customers require otherwise.

## GENE INFORMATION

**Gene Name** CCL14 chemokine (C-C motif) ligand 14 [ Homo sapiens (human) ]

**Official Symbol** CCL14

**Synonyms** CCL14; chemokine (C-C motif) ligand 14; SCYA14, small inducible cytokine subfamily A (Cys Cys), member 14; C-C motif chemokine 14; CKb1; HCC 1; HCC 3; MCIF; NCC 2; SCYL2; chemokine CC-3; new CC chemokine 2; chemokine CC-1/CC-3; hemofiltrate CC chemokine 1; small-inducible cytokine A14; small inducible cytokine subfamily A (Cys-Cys), member 14; CC-1; CC-3; CKB1; NCC2; SY14; HCC-1; HCC-3; NCC-2; SCYA14; HCC-1 (1-74); HCC-1/HCC-3; FLJ16015;

**Gene ID** 6358

**mRNA Refseq** NM\_032962

**Protein Refseq** NP\_116738

**MIM** 601392

**UniProt ID** Q16627

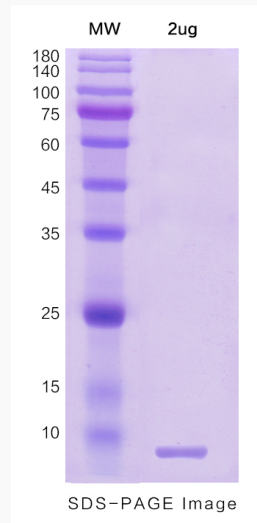
 Tel: 1-631-559-9269 1-516-512-3133

 Email: [info@creative-biomart.com](mailto:info@creative-biomart.com)  Fax: 1-631-938-8127

 45-1 Ramsey Road, Shirley, NY 11967, USA



**SDS-PAGE**



Tel: 1-631-559-9269 1-516-512-3133

Email: [info@creative-biomart.com](mailto:info@creative-biomart.com) Fax: 1-631-938-8127

45-1 Ramsey Road, Shirley, NY 11967, USA