

Recombinant Human CCL14 protein, rFc-tagged

Cat. No. CCL14-3696H Lot. No. (See product label)

SPECIFICATION

Product Overview	Recombinant Human CCL14 protein(Q16627-1)(Thr22-Asn93), fused with C-terminal rFc tag, was expressed in HEK293.
Species	Human
Source	HEK293
Form	Lyophilized from 0.22 µm filtered solution in PBS, pH 7.4. Normally 5% trehalose and 5% mannitol are added as protectants before lyophilization.
Molecular Mass	34.5 kDa
Endotoxin	<0.1 EU/µg protein, LAL method
Purity	>90 %, SDS-PAGE
Storage	It is recommended that the protein be aliquoted for optimal storage. Avoid repeated freeze-thaw cycles. Until expiry date, -20°C to -80°C as lyophilized proteins. 3 months, -20°C to -80°C under sterile conditions after reconstitution.
Reconstitution	Briefly centrifuge the tube before opening. Reconstitute at 0.1-0.5 mg/mL in sterile water.

GENE INFORMATION

 Tel: 1-631-559-9269 1-516-512-3133

 Email: info@creative-biomart.com  Fax: 1-631-938-8127

 45-1 Ramsey Road, Shirley, NY 11967, USA

Gene Name	CCL14 chemokine (C-C motif) ligand 14 [Homo sapiens]
Official Symbol	CCL14
Synonyms	CCL14; chemokine (C-C motif) ligand 14; SCYA14, small inducible cytokine subfamily A (Cys Cys), member 14; C-C motif chemokine 14; CKb1; HCC 1; HCC 3; MCIF; NCC 2; SCYL2; chemokine CC-3; new CC chemokine 2; chemokine CC-1/CC-3; hemofiltrate CC chemokine 1; small-inducible cytokine A14; small inducible cytokine subfamily A (Cys-Cys), member 14; CC-1; CC-3; CKB1; NCC2; SY14; HCC-1; HCC-3; NCC-2; SCYA14; HCC-1(1-74); HCC-1/HCC-3; FLJ16015;
Gene ID	6358
mRNA Refseq	NM_032962
Protein Refseq	NP_116738
MIM	601392
UniProt ID	Q16627

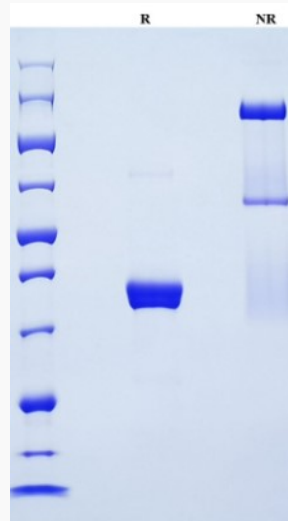
 Tel: 1-631-559-9269 1-516-512-3133

 Email: info@creative-biomart.com  Fax: 1-631-938-8127

 45-1 Ramsey Road, Shirley, NY 11967, USA



SDS-PAGE



Tel: 1-631-559-9269 1-516-512-3133

Email: info@creative-biomart.com Fax: 1-631-938-8127

45-1 Ramsey Road, Shirley, NY 11967, USA