

Recombinant Human CCL15 Protein, GST-Tagged

Cat. No. CCL15-0611H **Lot. No.** (See product label)

SPECIFICATION

Product Overview	Human CCL15 full-length ORF (NP_004158.2, 1 a.a. - 113 a.a.) recombinant protein with GST-tag at N-terminal.
Species	Human
Source	Wheat Germ
Description	This gene is located in a cluster of similar genes in the same region of chromosome 17. These genes encode CC cytokines, which are secreted proteins characterized by two adjacent cysteines. The product of this gene is chemotactic for T cells and monocytes, and acts through C-C chemokine receptor type 1 (CCR1). The proprotein is further processed into numerous smaller functional peptides. Naturally-occurring readthrough transcripts occur from this gene into the downstream gene, CCL14 (chemokine (C-C motif) ligand 14). [provided by RefSeq, Jan 2013]
Molecular Mass	38.6 kDa
AA Sequence	MKVSVAALSCLMLVAVLGSQAQFINDAETELMMSKLPLENPVVLNSFHFAADCCTSY ISQSIPCSLMKSYFETSSECSKPGVIFLTKKGRQVCAKPSGPGVQDCMKKLPYSI
Applications	Enzyme-linked Immunoabsorbent Assay Western Blot (Recombinant protein) Antibody Production Protein Array

 Tel: 1-631-559-9269 1-516-512-3133

 Email: info@creative-biomart.com  Fax: 1-631-938-8127

 45-1 Ramsey Road, Shirley, NY 11967, USA

Storage Store at -80 centigrade. Aliquot to avoid repeated freezing and thawing.

Storage Buffer 50 mM Tris-HCl, 10 mM reduced Glutathione, pH=8.0 in the elution buffer.

GENE INFORMATION

Gene Name CCL15 chemokine (C-C motif) ligand 15 [Homo sapiens]

Official Symbol CCL15

Synonyms

CCL15; chemokine (C-C motif) ligand 15; SCYA15, small inducible cytokine subfamily A (Cys Cys), member 15; C-C motif chemokine 15; CC chemokine 3; chemokine CC 2; HCC 2; HMRP 2B; leukotactin 1; Lkn 1; macrophage inflammatory protein 5; MIP 1 delta; MIP 1d; MIP 5; NCC 3; SCYL3; MIP-1 delta; chemokine CC-2; new CC chemokine 3; small-inducible cytokine A15; small inducible cytokine subfamily A (Cys-Cys), member 15; LKN1; NCC3; SY15; HCC-2; LKN-1; MIP-5; NCC-3; MIP-1D; MRP-2B; SCYA15; HMRP-2B;

Gene ID 6359

mRNA Refseq NM_032965

Protein Refseq NP_116741

MIM 601393

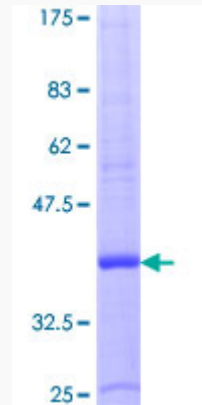
UniProt ID Q16663

 Tel: 1-631-559-9269 1-516-512-3133

 Email: info@creative-biomart.com  Fax: 1-631-938-8127

 45-1 Ramsey Road, Shirley, NY 11967, USA

**Quality Control
Testing**



12.5% SDS-PAGE Stained with Coomassie Blue.

 Tel: 1-631-559-9269 1-516-512-3133

 Email: info@creative-biomart.com  Fax: 1-631-938-8127

 45-1 Ramsey Road, Shirley, NY 11967, USA