

Recombinant Human CCL15 protein, His-tagged

Cat. No. CCL15-256H **Lot. No.** (See product label)

SPECIFICATION

| | |
|-------------------------|---|
| Product Overview | Recombinant Human CCL15 protein(Ser 46 –Ile 113)(Q16663-1) was expressed in E. coli, with a polyhistidine tag at the C-terminus. |
| Species | Human |
| Source | E. coli |
| ProteinLength | 46–113 aa |
| Form | Lyophilized from sterile PBS, pH 7.4. |
| Molecular Mass | The recombinant human CCL15 (aa 46-113) consists of 79 amino acids and has a calculated molecular mass of 8.9 kDa. It migrates as an approximately 10 kDa band in SDS-PAGE under reducing conditions. |
| Purity | > 90 % as determined by SDS-PAGE |
| Storage | Store it under sterile conditions at -20°C to -80°C upon receiving. Recommend to aliquot the protein into smaller quantities for optimal storage. Avoid repeated freeze-thaw cycles. |
| Reconstitution | It is recommended that sterile water be added to the vial to prepare a stock solution of 0.2 ug/ul. Centrifuge the vial at 4°C before opening to recover the entire contents. |
| protein Refseq- | http://www.ncbi.nlm.nih.gov/protein/NP_116741.1 |

 Tel: 1-631-559-9269 1-516-512-3133

 Email: info@creative-biomart.com  Fax: 1-631-938-8127

 45-1 Ramsey Road, Shirley, NY 11967, USA

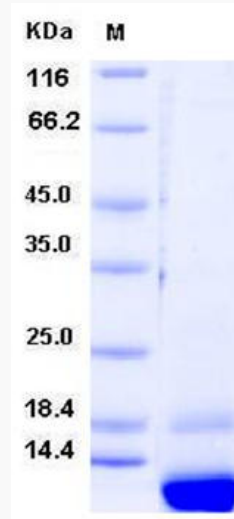
| | |
|-------------------------|--|
| Weblink | |
| Unit ID | Q16663 |
| Unit ID-Weblink | http://www.uniprot.org/uniprot/Q16663 |
| GENE INFORMATION | |
| Gene Name | CCL15 chemokine (C-C motif) ligand 15 [Homo sapiens] |
| Official Symbol | CCL15 |
| Synonyms | CCL15; chemokine (C-C motif) ligand 15; SCYA15, small inducible cytokine subfamily A (Cys Cys), member 15; C-C motif chemokine 15; CC chemokine 3; chemokine CC 2; HCC 2; HMRP 2B; leukotactin 1; Lkn 1; macrophage inflammatory protein 5; MIP 1 delta; MIP 1d; MIP 5; NCC 3; SCYL3; MIP-1 delta; chemokine CC-2; new CC chemokine 3; small-inducible cytokine A15; small inducible cytokine subfamily A (Cys-Cys), member 15; LKN1; NCC3; SY15; HCC-2; LKN-1; MIP-5; NCC-3; MIP-1D; MRP-2B; SCYA15; HMRP-2B; |
| Gene ID | 6359 |
| mRNA Refseq | NM_032965 |
| protein Refseq | NP_116741 |
| MIM | 601393 |

 Tel: 1-631-559-9269 1-516-512-3133

 Email: info@creative-biomart.com  Fax: 1-631-938-8127

 45-1 Ramsey Road, Shirley, NY 11967, USA

SDS-PAGE



 Tel: 1-631-559-9269 1-516-512-3133

 Email: info@creative-biomart.com  Fax: 1-631-938-8127

 45-1 Ramsey Road, Shirley, NY 11967, USA