

## Recombinant Human CCL15 protein

Cat. No. CCL15-30165TH Lot. No. (See product label)

### SPECIFICATION

<b>Product Overview</b>	Recombinant Human CCL15 protein was expressed in Escherichia coli.
<b>Species</b>	Human
<b>Source</b>	E.coli
<b>ProteinLength</b>	92
<b>Description</b>	Human CCL15 is belonging to the CC chemokine family and shares 35 % amino acid homology with human HCC1 (CCL14). CCL15 is most abundant in heart, skeletal muscle and adrenal gland, and low expressed in liver, small intestine, colon, and in certain leukocytes and macrophages of the lung. It is chemotactic for neutrophils, monocytes, and lymphocytes and elicits its effects by binding to cell surface chemokine receptors like CCR1 and CCR3. CCL15 has several cleaved chains. All of them are more potent chemoattractants than CCL15.
<b>Form</b>	Lyophilized from a 0.2µm filtered concentrated solution in 20 mM PB, pH 7.4, 100 mM NaCl.
<b>Bio-activity</b>	Fully biologically active when compared to standard. The biological activity determined by a chemotaxis bioassay using human T-lymphocytes is in a concentration range of 1.0-10 ng/ml.
<b>Molecular Mass</b>	Approximately 10.2 kDa, a single non-glycosylated polypeptide chain containing 92 amino acids.

 Tel: 1-631-559-9269 1-516-512-3133

 Email: [info@creative-biomart.com](mailto:info@creative-biomart.com)  Fax: 1-631-938-8127

 45-1 Ramsey Road, Shirley, NY 11967, USA

<b>AA Sequence</b>	QFINDAETELMMSKLPLENPVVLNSFHFAADCCTSYSISQSIPCSLMKSYFETSSECSK PGVIFLTKKGRQVCAKPSGPGVQDCMKKLPYSI
<b>Endotoxin</b>	Less than 1 EU/μg of rHuMIP-5/CCL15 as determined by LAL method.
<b>Purity</b>	>97% by SDS-PAGE and HPLC analysis.
<b>Storage</b>	Use a manual defrost freezer and avoid repeated freeze-thaw cycles. 12 months from date of receipt, -20 to -70 centigrade as supplied. 1 month, 2 to 8 centigrade under sterile conditions after reconstitution. 3 months, -20 to -70 centigrade under sterile conditions after reconstitution.
<b>Reconstitution</b>	We recommend that this vial be briefly centrifuged prior to opening to bring the contents to the bottom. Reconstitute in sterile distilled water or aqueous buffer containing 0.1 % BSA to a concentration of 0.1-1.0 mg/mL. Stock solutions should be apportioned into working aliquots and stored at ≤-20 centigrade. Further dilutions should be made in appropriate buffered solutions.

## GENE INFORMATION

<b>Gene Name</b>	<b>CCL15</b>
<b>Official Symbol</b>	<b>CCL15</b>
<b>Synonyms</b>	CCL15; chemokine (C-C motif) ligand 15; SCYA15, small inducible cytokine subfamily A (Cys Cys), member 15; C-C motif chemokine 15; CC chemokine 3; chemokine CC 2; HCC 2; HMRP 2B; leukotactin 1; Lkn 1; macrophage inflammatory protein 5; MIP 1 delta; MIP 1d; MIP 5; NCC 3; SCYL3; MIP-1 delta; chemokine CC-2; new CC chemokine 3; small-inducible cytokine A15; small inducible cytokine subfamily A (Cys-Cys), member 15; LKN1; NCC3; SY15; HCC-2; LKN-1; MIP-5; NCC-3; MIP-1D; MRP-2B; SCYA15; HMRP-2B;

 Tel: 1-631-559-9269 1-516-512-3133

 Email: [info@creative-biomart.com](mailto:info@creative-biomart.com)  Fax: 1-631-938-8127

 45-1 Ramsey Road, Shirley, NY 11967, USA

**Gene ID** 6359

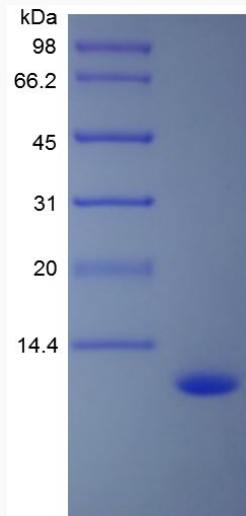
**mRNA Refseq** NM\_032965

**Protein Refseq** NP\_116741

**MIM** 601393

**UniProt ID** Q16663

**SDS-PAGE of  
CCL15-30165TH**



 Tel: 1-631-559-9269 1-516-512-3133

 Email: [info@creative-biomart.com](mailto:info@creative-biomart.com)  Fax: 1-631-938-8127

 45-1 Ramsey Road, Shirley, NY 11967, USA