

Recombinant Human CCL15 Protein, Myc/DDK-tagged, C13 and N15-labeled

Cat. No. CCL15-3422H **Lot. No.** (See product label)

SPECIFICATION

Product Overview	CCL15 MS Standard C13 and N15-labeled recombinant protein (NP_004158) with a C-terminal MYC/DDK tag, was expressed in HEK293 cells.
Species	Human
Source	HEK293
Description	This gene is located in a cluster of similar genes in the same region of chromosome 17. These genes encode CC cytokines, which are secreted proteins characterized by two adjacent cysteines. The product of this gene is chemotactic for T cells and monocytes, and acts through C-C chemokine receptor type 1 (CCR1). The proprotein is further processed into numerous smaller functional peptides. Naturally-occurring readthrough transcripts occur from this gene into the downstream gene, CCL14 (chemokine (C-C motif) ligand 14).
Molecular Mass	12.24 kDa
AA Sequence	MKVSVAALSCLMLVAVLGSQAQFTNDAETELMMSKLPLENPVVLNSFHFAADCCTS YISQSIPCSLMKSYFETSSECSKPGVIFLTKKGRQVCAKPSGPGVQDCMKKLPYSIT RTRPLEQKLISEEDLAANDILDYKDDDDKV
Purity	> 80% as determined by SDS-PAGE and Coomassie blue staining
Stability	Stable for 3 months from receipt of products under proper storage and handling

 Tel: 1-631-559-9269 1-516-512-3133

 Email: info@creative-biomart.com  Fax: 1-631-938-8127

 45-1 Ramsey Road, Shirley, NY 11967, USA

conditions.

Storage Store at -80 centigrade. Avoid repeated freeze-thaw cycles.

Concentration 50 µg/mL as determined by BCA

Storage Buffer 100 mM glycine, 25 mM Tris-HCl, pH 7.3.

GENE INFORMATION

Gene Name CCL15 C-C motif chemokine ligand 15 [Homo sapiens (human)]

Official Symbol CCL15

Synonyms CCL15; chemokine (C-C motif) ligand 15; SCYA15, small inducible cytokine subfamily A (Cys Cys), member 15; C-C motif chemokine 15; CC chemokine 3; chemokine CC 2; HCC 2; HMRP 2B; leukotactin 1; Lkn 1; macrophage inflammatory protein 5; MIP 1 delta; MIP 1d; MIP 5; NCC 3; SCYL3; MIP-1 delta; chemokine CC-2; new CC chemokine 3; small-inducible cytokine A15; small inducible cytokine subfamily A (Cys-Cys), member 15; LKN1; NCC3; SY15; HCC-2; LKN-1; MIP-5; NCC-3; MIP-1D; MRP-2B; SCYA15; HMRP-2B;

Gene ID 6359

mRNA Refseq NM_004167

Protein Refseq NP_004158

MIM 601393

UniProt ID Q16663

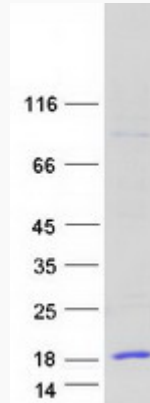
 Tel: 1-631-559-9269 1-516-512-3133

 Email: info@creative-biomart.com  Fax: 1-631-938-8127

 45-1 Ramsey Road, Shirley, NY 11967, USA



SDS-PAGE



Tel: 1-631-559-9269 1-516-512-3133

Email: info@creative-biomart.com Fax: 1-631-938-8127

45-1 Ramsey Road, Shirley, NY 11967, USA