

Recombinant Human CCL15 protein, rFc-tagged

Cat. No. CCL15-3697H Lot. No. (See product label)

SPECIFICATION

Product Overview	Recombinant Human CCL15 protein(Q16663)(Ser46-Ile113), fused with C-terminal rFc tag, was expressed in HEK293.
Species	Human
Source	HEK293
Form	Lyophilized from 0.22 µm filtered solution in PBS, pH 7.4. Normally 5% trehalose and 5% mannitol are added as protectants before lyophilization.
Molecular Mass	33.5 kDa
Endotoxin	<0.1 EU/µg protein, LAL method
Purity	>90 %, SDS-PAGE
Storage	It is recommended that the protein be aliquoted for optimal storage. Avoid repeated freeze-thaw cycles. Until expiry date, -20°C to -80°C as lyophilized proteins. 3 months, -20°C to -80°C under sterile conditions after reconstitution.
Reconstitution	Briefly centrifuge the tube before opening. Reconstitute at 0.1-0.5 mg/mL in sterile water.

GENE INFORMATION

 Tel: 1-631-559-9269 1-516-512-3133

 Email: info@creative-biomart.com  Fax: 1-631-938-8127

 45-1 Ramsey Road, Shirley, NY 11967, USA

Gene Name	CCL15 chemokine (C-C motif) ligand 15 [Homo sapiens]
Official Symbol	CCL15
Synonyms	CCL15; chemokine (C-C motif) ligand 15; SCYA15, small inducible cytokine subfamily A (Cys Cys), member 15; C-C motif chemokine 15; CC chemokine 3; chemokine CC 2; HCC 2; HMRP 2B; leukotactin 1; Lkn 1; macrophage inflammatory protein 5; MIP 1 delta; MIP 1d; MIP 5; NCC 3; SCYL3; MIP-1 delta; chemokine CC-2; new CC chemokine 3; small-inducible cytokine A15; small inducible cytokine subfamily A (Cys-Cys), member 15; LKN1; NCC3; SY15; HCC-2; LKN-1; MIP-5; NCC-3; MIP-1D; MRP-2B; SCYA15; HMRP-2B;
Gene ID	6359
mRNA Refseq	NM_032965
Protein Refseq	NP_116741
MIM	601393
UniProt ID	Q16663

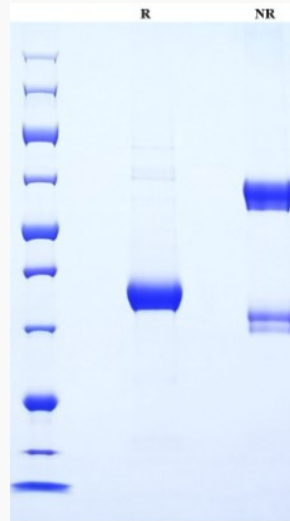
 Tel: 1-631-559-9269 1-516-512-3133

 Email: info@creative-biomart.com  Fax: 1-631-938-8127

 45-1 Ramsey Road, Shirley, NY 11967, USA



SDS-PAGE



Tel: 1-631-559-9269 1-516-512-3133

Email: info@creative-biomart.com Fax: 1-631-938-8127

45-1 Ramsey Road, Shirley, NY 11967, USA