

Recombinant Human CCL16 Protein, GST-Tagged

Cat. No. CCL16-0613H Lot. No. (See product label)

SPECIFICATION

Product Overview Human CCL16 partial ORF (NP_004581.1, 25 a.a. - 120 a.a.) recombinant protein with GST-tag at N-terminal.

Species Human

Source Wheat Germ

Description This gene is one of several cytokine genes clustered on the q-arm of chromosome 17. Cytokines are a family of secreted proteins involved in immunoregulatory and inflammatory processes. The CC cytokines are proteins characterized by two adjacent cysteines. The cytokine encoded by this gene displays chemotactic activity for lymphocytes and monocytes but not for neutrophils. This cytokine also shows a potent myelosuppressive activity and suppresses proliferation of myeloid progenitor cells. The expression of this gene is upregulated by IL-10. [provided by RefSeq, Jul 2008]

Molecular Mass 36.3 kDa

AA Sequence PKVPEWVNTNPSTCCLKYYEKVLPRLVVGYSKALNCHLPALIFVTKRNREVCTNPND
DWVQEYIKDPNLPLLPTRNLSTVKIITAKNGQPQLLSQ

Applications Enzyme-linked Immunoabsorbent Assay
Western Blot (Recombinant protein)
Antibody Production
Protein Array

 Tel: 1-631-559-9269 1-516-512-3133

 Email: info@creative-biomart.com  Fax: 1-631-938-8127

 45-1 Ramsey Road, Shirley, NY 11967, USA

Storage Store at -80 centigrade. Aliquot to avoid repeated freezing and thawing.

Storage Buffer 50 mM Tris-HCl, 10 mM reduced Glutathione, pH=8.0 in the elution buffer.

GENE INFORMATION

Gene Name CCL16 chemokine (C-C motif) ligand 16 [Homo sapiens]

Official Symbol CCL16

Synonyms

CCL16; chemokine (C-C motif) ligand 16; SCYA16, small inducible cytokine subfamily A (Cys Cys), member 16; C-C motif chemokine 16; CKb12; HCC 4; LCC 1; LEC; LMC; Mtn 1; NCC 4; SCYL4; monotactin-1; chemokine LEC; chemokine CC-4; new CC chemokine 4; liver CC chemokine-1; IL-10-inducible chemokine; liver-expressed chemokine; small-inducible cytokine A16; lymphocyte and monocyte chemoattractant; small inducible cytokine subfamily A (Cys-Cys), member 16; NCC4; HCC-4; LCC-1; Mtn-1; NCC-4; ILINCK; SCYA16; MGC117051;

Gene ID 6360

mRNA Refseq NM_004590

Protein Refseq NP_004581

MIM 601394

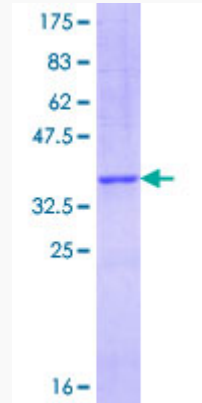
UniProt ID O15467

 Tel: 1-631-559-9269 1-516-512-3133

 Email: info@creative-biomart.com  Fax: 1-631-938-8127

 45-1 Ramsey Road, Shirley, NY 11967, USA

**Quality Control
Testing**



12.5% SDS-PAGE Stained with Coomassie Blue.

 Tel: 1-631-559-9269 1-516-512-3133

 Email: info@creative-biomart.com  Fax: 1-631-938-8127

 45-1 Ramsey Road, Shirley, NY 11967, USA