

## Recombinant Human CCL16 protein, His-tagged

Cat. No. CCL16-0614H Lot. No. (See product label)

### SPECIFICATION

|                         |   |
|-------------------------|---|
| <b>Product Overview</b> | Recombinant Human CCL16 protein(NP_004581.1) (Gln24-Gln120) was expressed in Yeast with a polyhistidine tag at the C-terminus.  |
| <b>Species</b>          | Human   |
| <b>Source</b>           | Yeast   |
| <b>ProteinLength</b>    | 24-120 aa   |
| <b>Form</b>             | Lyophilized from sterile PBS, pH 7.4.   |
| <b>Molecular Mass</b>   | The recombinant human CCL16 consists of 107 amino acids and predicts a molecular mass of 12.6 KDa. It migrates as an approximately 15 KDa band in SDS-PAGE under reducing conditions. |
| <b>Purity</b>           | > 95 % as determined by SDS-PAGE  |
| <b>Storage</b>          | Store it under sterile conditions at -20°C to -80°C upon receiving. Recommend to aliquot the protein into smaller quantities for optimal storage. Avoid repeated freeze-thaw cycles.  |
| <b>Reconstitution</b>   | It is recommended that sterile water be added to the vial to prepare a stock solution of 0.2 ug/ul. Centrifuge the vial at 4°C before opening to recover the entire contents.         |

### GENE INFORMATION

 Tel: 1-631-559-9269 1-516-512-3133

 Email: [info@creative-biomart.com](mailto:info@creative-biomart.com)  Fax: 1-631-938-8127

 45-1 Ramsey Road, Shirley, NY 11967, USA



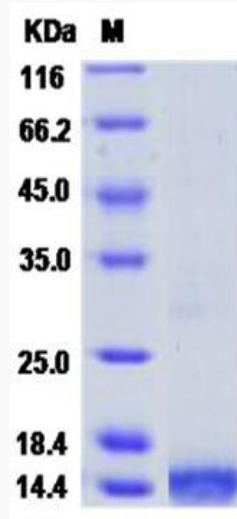
|                        |  |
|------------------------|--|
| <b>Gene Name</b>       | CCL16 chemokine (C-C motif) ligand 16 [ Homo sapiens ]   |
| <b>Official Symbol</b> | CCL16  |
| <b>Synonyms</b>        | CCL16; chemokine (C-C motif) ligand 16; SCYA16, small inducible cytokine subfamily A (Cys Cys), member 16; C-C motif chemokine 16; CKb12; HCC 4; LCC 1; LEC; LMC; Mtn 1; NCC 4; SCYL4; monotactin-1; chemokine LEC; chemokine CC-4; new CC chemokine 4; liver CC chemokine-1; IL-10-inducible chemokine; liver-expressed chemokine; small-inducible cytokine A16; lymphocyte and monocyte chemoattractant; small inducible cytokine subfamily A (Cys-Cys), member 16; NCC4; HCC-4; LCC-1; Mtn-1; NCC-4; ILINCK; SCYA16; MGC117051; |
| <b>Gene ID</b>         | 6360   |
| <b>mRNA Refseq</b>     | NM_004590  |
| <b>Protein Refseq</b>  | NP_004581  |
| <b>MIM</b>             | 601394   |
| <b>UniProt ID</b>      | O15467   |

Tel: 1-631-559-9269 1-516-512-3133

Email: [info@creative-biomart.com](mailto:info@creative-biomart.com) Fax: 1-631-938-8127

45-1 Ramsey Road, Shirley, NY 11967, USA

**SDS-PAGE**



 Tel: 1-631-559-9269 1-516-512-3133

 Email: [info@creative-biomart.com](mailto:info@creative-biomart.com)  Fax: 1-631-938-8127

 45-1 Ramsey Road, Shirley, NY 11967, USA