

Recombinant Human CCL16 Protein (Gln24-Gln120), N-GST tagged

Cat. No. CCL16-1014H Lot. No. (See product label)

SPECIFICATION

Product Overview	Recombinant Human CCL16/HCC-4 (Gln24-Gln120) fused with the N-GST tag was expressed in E. coli.
Species	Human
Source	E.coli
ProteinLength	Gln24-Gln120
Form	Lyophilized powder/frozen liquid
Molecular Mass	38.03 kDa
Purity	>90% as determined by SDS-PAGE.
Notes	For research use only.
Storage	Use a manual defrost freezer and avoid repeated freeze thaw cycles. Store at 2 to 8 centigrade for one week. Store at -20 to -80 centigrade for twelve months from the date of receipt.
Storage Buffer	0.01M PBS, pH 7.4, 0.02% NLS
Reconstitution	Reconstitute in sterile water for a stock solution.

 Tel: 1-631-559-9269 1-516-512-3133

 Email: info@creative-biomart.com  Fax: 1-631-938-8127

 45-1 Ramsey Road, Shirley, NY 11967, USA

Shipping They are shipped out with dry ice/blue ice unless customers require otherwise.

GENE INFORMATION

Gene Name CCL16 chemokine (C-C motif) ligand 16 [Homo sapiens (human)]

Official Symbol CCL16

Synonyms CCL16; chemokine (C-C motif) ligand 16; SCYA16, small inducible cytokine subfamily A (Cys Cys), member 16; C-C motif chemokine 16; CKb12; HCC 4; LCC 1; LEC; LMC; Mtn 1; NCC 4; SCYL4; monactin-1; chemokine LEC; chemokine CC-4; new CC chemokine 4; liver CC chemokine-1; IL-10-inducible chemokine; liver-expressed chemokine; small-inducible cytokine A16; lymphocyte and monocyte chemoattractant; small inducible cytokine subfamily A (Cys-Cys), member 16; NCC4; HCC-4; LCC-1; Mtn-1; NCC-4; ILINCK; SCYA16; MGC117051;

Gene ID 6360

mRNA Refseq NM_004590

Protein Refseq NP_004581

MIM 601394

UniProt ID O15467

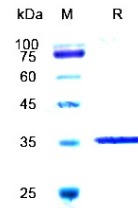
 Tel: 1-631-559-9269 1-516-512-3133

 Email: info@creative-biomart.com  Fax: 1-631-938-8127

 45-1 Ramsey Road, Shirley, NY 11967, USA



SDS-PAGE



Tel: 1-631-559-9269 1-516-512-3133

Email: info@creative-biomart.com Fax: 1-631-938-8127

45-1 Ramsey Road, Shirley, NY 11967, USA