

Recombinant Human CCL16 protein, His-HA-tagged

Cat. No. CCL16-1498H Lot. No. (See product label)

SPECIFICATION

Product Overview	Recombinant Human CCL16 protein(O15467)(24-120aa), fused to N-terminal His-HA tag, was expressed in E. coli.
Species	Human
Source	E.coli
ProteinLength	24-120aa
Form	If the delivery form is liquid, the default storage buffer is Tris/PBS-based buffer, 5%-50% glycerol. If the delivery form is lyophilized powder, the buffer before lyophilization is Tris/PBS-based buffer, 6% Trehalose, pH 8.0.
Molecular Mass	13.8 kDa
Purity	Greater than 85% as determined by SDS-PAGE.
Storage	Store at -20°C/-80°C upon receipt, aliquoting is necessary for mutiple use. Avoid repeated freeze-thaw cycles.
Reconstitution	It is recommended that sterile water be added to the vial to prepare a stock solution of 0.2 ug/ul. Centrifuge the vial at 4°C before opening to recover the entire contents.

GENE INFORMATION

 Tel: 1-631-559-9269 1-516-512-3133

 Email: info@creative-biomart.com  Fax: 1-631-938-8127

 45-1 Ramsey Road, Shirley, NY 11967, USA

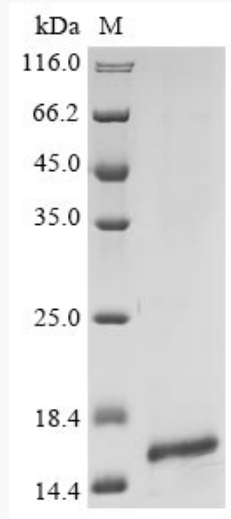
Gene Name	CCL16 chemokine (C-C motif) ligand 16 [Homo sapiens]
Official Symbol	CCL16
Synonyms	CCL16; chemokine (C-C motif) ligand 16; SCYA16, small inducible cytokine subfamily A (Cys Cys), member 16; C-C motif chemokine 16; CKb12; HCC 4; LCC 1; LEC; LMC; Mtn 1; NCC 4; SCYL4; monotactin-1; chemokine LEC; chemokine CC-4; new CC chemokine 4; liver CC chemokine-1; IL-10-inducible chemokine; liver-expressed chemokine; small-inducible cytokine A16; lymphocyte and monocyte chemoattractant; small inducible cytokine subfamily A (Cys-Cys), member 16; NCC4; HCC-4; LCC-1; Mtn-1; NCC-4; ILINCK; SCYA16; MGC117051;
Gene ID	6360
mRNA Refseq	NM_004590
Protein Refseq	NP_004581
MIM	601394
UniProt ID	O15467

 Tel: 1-631-559-9269 1-516-512-3133

 Email: info@creative-biomart.com  Fax: 1-631-938-8127

 45-1 Ramsey Road, Shirley, NY 11967, USA

SDS-PAGE



 Tel: 1-631-559-9269 1-516-512-3133

 Email: info@creative-biomart.com  Fax: 1-631-938-8127

 45-1 Ramsey Road, Shirley, NY 11967, USA