

Recombinant Human CCL17 protein, His-tagged

Cat. No. CCL17-0265H **Lot. No.** (See product label)

SPECIFICATION

Product Overview	Recombinant Human CCL17 protein(Q92583-1) (Met 1-Ser 94) was expressed in Insect Cells, fused with a polyhistidine tag at the C-terminus.
Species	Human
Source	Insect Cells
ProteinLength	1-94 aa
Form	Lyophilized from sterile 20mM Tris, 500mM NaCl, pH 7.4, 10% gly.
Molecular Mass	The secreted recombinant human CCL17 consists of 81 amino acids and predicts a molecular mass of 9.5 kDa. It migrates as an approximately 12 kDa band in SDS-PAGE under reducing conditions.
Endotoxin	< 1 EU/g as determined by LAL test.
Purity	> 94 % as determined by SDS-PAGE
Storage	Store it under sterile conditions at -20°C to -80°C upon receiving. Recommend to aliquot the protein into smaller quantities for optimal storage. Avoid repeated freeze-thaw cycles.
Reconstitution	It is recommended that sterile water be added to the vial to prepare a stock solution of 0.2 ug/ul. Centrifuge the vial at 4°C before opening to recover the entire contents.

 Tel: 1-631-559-9269 1-516-512-3133

 Email: info@creative-biomart.com  Fax: 1-631-938-8127

 45-1 Ramsey Road, Shirley, NY 11967, USA

GENE INFORMATION

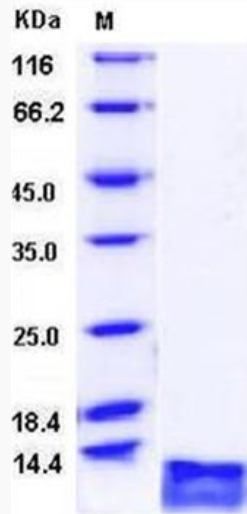
Gene Name	CCL17 chemokine (C-C motif) ligand 17 [Homo sapiens]
Official Symbol	CCL17
Synonyms	CCL17; chemokine (C-C motif) ligand 17; SCYA17, small inducible cytokine subfamily A (Cys Cys), member 17; C-C motif chemokine 17; ABCD 2; TARC; CC chemokine TARC; T cell-directed CC chemokine; small-inducible cytokine A17; thymus and activation-regulated chemokine; small inducible cytokine subfamily A (Cys-Cys), member 17; ABCD-2; SCYA17; A-152E5.3; MGC138271; MGC138273;
Gene ID	6361
mRNA Refseq	NM_002987
Protein Refseq	NP_002978
MIM	601520
UniProt ID	Q92583

 Tel: 1-631-559-9269 1-516-512-3133

 Email: info@creative-biomart.com  Fax: 1-631-938-8127

 45-1 Ramsey Road, Shirley, NY 11967, USA

SDS-PAGE



 Tel: 1-631-559-9269 1-516-512-3133

 Email: info@creative-biomart.com  Fax: 1-631-938-8127

 45-1 Ramsey Road, Shirley, NY 11967, USA