

## Recombinant Human CCL17 Protein, GST-Tagged

Cat. No. CCL17-0614H Lot. No. (See product label)

### SPECIFICATION

<b>Product Overview</b>	Human CCL17 partial ORF (NP_002978, 24 a.a. - 94 a.a.) recombinant protein with GST-tag at N-terminal.
<b>Species</b>	Human
<b>Source</b>	Wheat Germ
<b>Description</b>	This antimicrobial gene is one of several Cys-Cys (CC) cytokine genes clustered on the q arm of chromosome 16. Cytokines are a family of secreted proteins involved in immunoregulatory and inflammatory processes. The CC cytokines are proteins characterized by two adjacent cysteines. The cytokine encoded by this gene displays chemotactic activity for T lymphocytes, but not monocytes or granulocytes. The product of this gene binds to chemokine receptors CCR4 and CCR8. This chemokine plays important roles in T cell development in thymus as well as in trafficking and activation of mature T cells. [provided by RefSeq, Sep 2014]
<b>Molecular Mass</b>	33.55 kDa
<b>AA Sequence</b>	ARGTNVGRECCLEYFKGAIPLRKLKTWYQTSEDCSRDAIVFVTVQGRAICSDPNNKR VKNVAVKYLQSLERS
<b>Applications</b>	Enzyme-linked Immunoabsorbent Assay Western Blot (Recombinant protein) Antibody Production Protein Array

 Tel: 1-631-559-9269 1-516-512-3133

 Email: [info@creative-biomart.com](mailto:info@creative-biomart.com)  Fax: 1-631-938-8127

 45-1 Ramsey Road, Shirley, NY 11967, USA

**Storage** Store at -80 centigrade. Aliquot to avoid repeated freezing and thawing.

**Storage Buffer** 50 mM Tris-HCl, 10 mM reduced Glutathione, pH=8.0 in the elution buffer.

## GENE INFORMATION

**Gene Name** CCL17 chemokine (C-C motif) ligand 17 [ Homo sapiens ]

**Official Symbol** CCL17

**Synonyms** CCL17; chemokine (C-C motif) ligand 17; SCYA17, small inducible cytokine subfamily A (Cys Cys), member 17; C-C motif chemokine 17; ABCD 2; TARC; CC chemokine TARC; T cell-directed CC chemokine; small-inducible cytokine A17; thymus and activation-regulated chemokine; small inducible cytokine subfamily A (Cys-Cys), member 17; ABCD-2; SCYA17; A-152E5.3; MGC138271; MGC138273;

**Gene ID** 6361

**mRNA Refseq** NM\_002987

**Protein Refseq** NP\_002978

**MIM** 601520

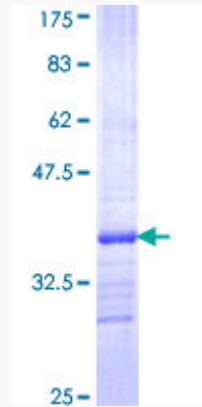
**UniProt ID** Q92583

 Tel: 1-631-559-9269 1-516-512-3133

 Email: [info@creative-biomart.com](mailto:info@creative-biomart.com)  Fax: 1-631-938-8127

 45-1 Ramsey Road, Shirley, NY 11967, USA

**Quality Control  
Testing**



12.5% SDS-PAGE Stained with Coomassie Blue.

 Tel: 1-631-559-9269 1-516-512-3133

 Email: [info@creative-biomart.com](mailto:info@creative-biomart.com)  Fax: 1-631-938-8127

 45-1 Ramsey Road, Shirley, NY 11967, USA