

Recombinant Dog CCL17 protein, His-KSI-tagged

Cat. No. CCL17-1398D Lot. No. (See product label)

SPECIFICATION

Product Overview	Recombinant Dog CCL17 protein(Q95N01)(24-99aa), fused to N-terminal His-KSI tag, was expressed in E. coli.
Species	Dog
Source	E.coli
ProteinLength	24-99aa
Form	If the delivery form is liquid, the default storage buffer is Tris/PBS-based buffer, 5%-50% glycerol. If the delivery form is lyophilized powder, the buffer before lyophilization is Tris/PBS-based buffer, 6% Trehalose, pH 8.0.
Molecular Mass	23.9 kDa
Purity	Greater than 85% as determined by SDS-PAGE.
Storage	Store at -20°C/-80°C upon receipt, aliquoting is necessary for mutiple use. Avoid repeated freeze-thaw cycles.
Reconstitution	It is recommended that sterile water be added to the vial to prepare a stock solution of 0.2 ug/ul. Centrifuge the vial at 4°C before opening to recover the entire contents.

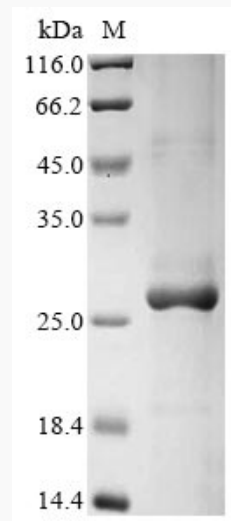
GENE INFORMATION

 Tel: 1-631-559-9269 1-516-512-3133

 Email: info@creative-biomart.com  Fax: 1-631-938-8127

 45-1 Ramsey Road, Shirley, NY 11967, USA

Gene Name	CCL17 chemokine (C-C motif) ligand 17 [<i>Canis lupus familiaris</i>]
Official Symbol	CCL17
Synonyms	CCL17; chemokine (C-C motif) ligand 17; C-C motif chemokine 17; CC chemokine TARC; small-inducible cytokine A17; thymus and activation-regulated chemokine; TARC;
Gene ID	403586
mRNA Refseq	NM_001003051
Protein Refseq	NP_001003051

SDS-PAGE


 Tel: 1-631-559-9269 1-516-512-3133

 Email: info@creative-biomart.com  Fax: 1-631-938-8127

 45-1 Ramsey Road, Shirley, NY 11967, USA