

# Recombinant Human C motif chemokine ligand 17 Protein, Tag Free

**Cat. No.** CCL17-239H    **Lot. No.** (See product label)

## SPECIFICATION

<b>Product Overview</b>	Recombinant human CCL17/TARC protein (Q92583) (Ala 24-Ser 94) without tag was expressed in HEK293.
<b>Species</b>	Human
<b>Source</b>	HEK293
<b>ProteinLength</b>	24-94aa
<b>Description</b>	CCL17 is a powerful chemokine produced in the thymus and by antigen-presenting cells like dendritic cells, macrophages, and monocytes. CCL17 plays a complex role in cancer. It attracts T-regulatory cells allowing for some cancers to evade an immune response. However, in other cancers, such as melanoma, an increase in CCL17 is linked to an improved outcome. CCL17 has also been linked to autoimmune and allergic diseases.
<b>Tag</b>	Non
<b>Molecular Mass</b>	8.4 kDa
<b>Endotoxin</b>	Less than 1.0 EU/μg by the LAL method.
<b>Purity</b>	>95% as determined by SDS-PAGE.

 Tel: 1-631-559-9269    1-516-512-3133

 Email: [info@creative-biomart.com](mailto:info@creative-biomart.com)     Fax: 1-631-938-8127

 45-1 Ramsey Road, Shirley, NY 11967, USA

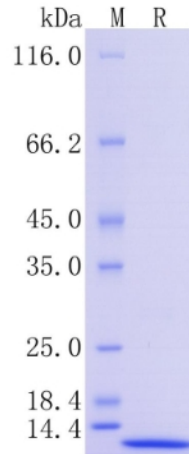
<b>Storage</b>	Please avoid repeated freeze-thaw cycles. Samples are stable for up to twelve months from date of receipt at -20 to -80 centigrade. It is recommended that aliquot the reconstituted solution to minimize freeze-thaw cycles.
<b>Storage Buffer</b>	Lyophilized from a 0.2 µm filtered solution of PBS, pH7.4, 5% Trehalose, 5% mannitol.
<b>Reconstitution</b>	Reconstitute at 250 µg/mL in sterile water.
<b>GENE INFORMATION</b>	
<b>Gene Name</b>	CCL17 C-C motif chemokine ligand 17 [ Homo sapiens (human) ]
<b>Official Symbol</b>	CCL17
<b>Synonyms</b>	CCL17; chemokine (C-C motif) ligand 17; SCYA17, small inducible cytokine subfamily A (Cys Cys), member 17; C-C motif chemokine 17; ABCD 2; TARC; CC chemokine TARC; T cell-directed CC chemokine; small-inducible cytokine A17; thymus and activation-regulated chemokine; small inducible cytokine subfamily A (Cys-Cys), member 17; ABCD-2; SCYA17; A-152E5.3; MGC138271; MGC138273;
<b>Gene ID</b>	6361
<b>mRNA Refseq</b>	NM_002987
<b>Protein Refseq</b>	NP_002978
<b>MIM</b>	601520
<b>UniProt ID</b>	Q92583

 Tel: 1-631-559-9269 1-516-512-3133

 Email: [info@creative-biomart.com](mailto:info@creative-biomart.com)  Fax: 1-631-938-8127

 45-1 Ramsey Road, Shirley, NY 11967, USA

**Protein on SDS-  
PAGE under  
reducing (R)  
condition.**



 Tel: 1-631-559-9269 1-516-512-3133

 Email: [info@creative-biomart.com](mailto:info@creative-biomart.com)  Fax: 1-631-938-8127

 45-1 Ramsey Road, Shirley, NY 11967, USA