

Recombinant Dog CCL17 protein, His-tagged

Cat. No. CCL17-3632D Lot. No. (See product label)

SPECIFICATION

Product Overview	Recombinant Dog CCL17 protein(Q95N01)(24-99aa), fused with C-terminal His tag, was expressed in Yeast.
Species	Dog
Source	Yeast
ProteinLength	24-99aa
Form	If the delivery form is liquid, the default storage buffer is Tris/PBS-based buffer, 5%-50% glycerol. If the delivery form is lyophilized powder, the buffer before lyophilization is Tris/PBS-based buffer, 6% Trehalose, pH 8.0.
Molecular Mass	10.1 kDa
Purity	Greater than 85% as determined by SDS-PAGE.
Storage	Store at -20°C/-80°C upon receipt, aliquoting is necessary for mutiple use. Avoid repeated freeze-thaw cycles.
Reconstitution	We recommend that this vial be briefly centrifuged prior to opening to bring the contents to the bottom. Please reconstitute protein in deionized sterile water to a concentration of 0.1-1.0 mg/mL. We recommend to add 5-50% of glycerol (final concentration) and aliquot for long-term storage at -20°C/-80°C.

 Tel: 1-631-559-9269 1-516-512-3133

 Email: info@creative-biomart.com  Fax: 1-631-938-8127

 45-1 Ramsey Road, Shirley, NY 11967, USA

AA Sequence ARGTNVGRECCLEYFKGAIPISRLTRWYKTSGECPKDAIVFVTVQGKSICSDPKDKR
 VKKAVRYLQRTWKGGPQES

GENE INFORMATION

Gene Name CCL17 chemokine (C-C motif) ligand 17 [*Canis lupus familiaris*]

Official Symbol CCL17

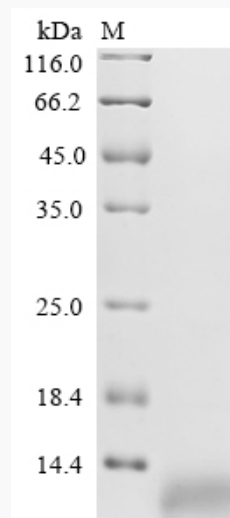
Synonyms CCL17; chemokine (C-C motif) ligand 17; C-C motif chemokine 17; CC chemokine
 TARC; small-inducible cytokine A17; thymus and activation-regulated chemokine;
 TARC;

Gene ID 403586

mRNA Refseq NM_001003051

Protein Refseq NP_001003051

SDS-PAGE



 Tel: 1-631-559-9269 1-516-512-3133

 Email: info@creative-biomart.com  Fax: 1-631-938-8127

 45-1 Ramsey Road, Shirley, NY 11967, USA