

## Recombinant Dog CCL17 protein(24-99aa), His-tagged

Cat. No. CCL17-4930D Lot. No. (See product label)

### SPECIFICATION

<b>Product Overview</b>	Recombinant Dog CCL17 protein(Q95N01)(24-99aa), fused with C-terminal His tag, was expressed in HEK293.
<b>Species</b>	Dog
<b>Source</b>	HEK293
<b>ProteinLength</b>	24-99aa
<b>Form</b>	If the delivery form is liquid, the default storage buffer is Tris/PBS-based buffer, 5%-50% glycerol. If the delivery form is lyophilized powder, the buffer before lyophilization is Tris/PBS-based buffer, 6% Trehalose, pH 8.0.
<b>Molecular Mass</b>	10.8 kDa
<b>Purity</b>	Greater than 90% as determined by SDS-PAGE. Greater than 90% as determined by SEC-HPLC.
<b>Storage</b>	Store at -20°C/-80°C upon receipt, aliquoting is necessary for multiple use. Avoid repeated freeze-thaw cycles.
<b>Reconstitution</b>	We recommend that this vial be briefly centrifuged prior to opening to bring the contents to the bottom. Please reconstitute protein in deionized sterile water to a concentration of 0.1-1.0 mg/mL. We recommend to add 5-50% of glycerol (final concentration) and aliquot for long-term storage at -20°C/-80°C.

 Tel: 1-631-559-9269 1-516-512-3133

 Email: [info@creative-biomart.com](mailto:info@creative-biomart.com)  Fax: 1-631-938-8127

 45-1 Ramsey Road, Shirley, NY 11967, USA

**AA Sequence**                    ARGTNVGRECCLEYFKGAIPISRLTRWYKTSGECPKDAIVFVTVQGKSICSDPKDKR  
 VKKAVRYLQRTWKGGPQES

## GENE INFORMATION

**Gene Name**                    CCL17 chemokine (C-C motif) ligand 17 [ *Canis lupus familiaris* ]

**Official Symbol**            CCL17

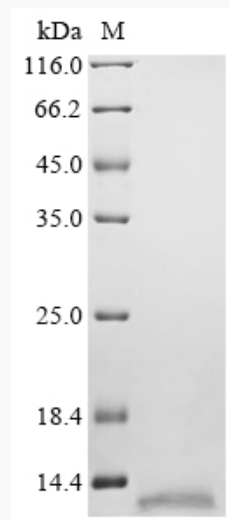
**Synonyms**                    CCL17; chemokine (C-C motif) ligand 17; C-C motif chemokine 17; CC chemokine TARC; small-inducible cytokine A17; thymus and activation-regulated chemokine; TARC;

**Gene ID**                        403586

**mRNA Refseq**                NM\_001003051

**Protein Refseq**               NP\_001003051

## SDS-PAGE



 Tel: 1-631-559-9269    1-516-512-3133

 Email: [info@creative-biomart.com](mailto:info@creative-biomart.com)     Fax: 1-631-938-8127

 45-1 Ramsey Road, Shirley, NY 11967, USA