

Recombinant Dog CCL17 protein(24-99aa), MBP&His-Avi-tagged, Biotinylated

Cat. No. CCL17-6432D Lot. No. (See product label)

SPECIFICATION

Product Overview	Biotinylated Recombinant Dog CCL17 protein(Q95N01)(24-99aa), fused with N-terminal MBP tag and C-terminal His and Avi tag, was expressed in E.coli.
Species	Dog
Source	E.coli
ProteinLength	24-99aa
Conjugation/Label	Biotin
Form	If the delivery form is liquid, the default storage buffer is Tris/PBS-based buffer, 5%-50% glycerol. If the delivery form is lyophilized powder, the buffer before lyophilization is Tris/PBS-based buffer, 6% Trehalose, pH 8.0.
Molecular Mass	56.4 kDa
Purity	Greater than 85% as determined by SDS-PAGE.
Storage	Store at -20°C/-80°C upon receipt, aliquoting is necessary for mutiple use. Avoid repeated freeze-thaw cycles.
Reconstitution	We recommend that this vial be briefly centrifuged prior to opening to bring the contents to the bottom. Please reconstitute protein in deionized sterile water to a

 Tel: 1-631-559-9269 1-516-512-3133

 Email: info@creative-biomart.com  Fax: 1-631-938-8127

 45-1 Ramsey Road, Shirley, NY 11967, USA



concentration of 0.1-1.0 mg/mL. We recommend to add 5-50% of glycerol (final concentration) and aliquot for long-term storage at -20°C/-80°C.

AA Sequence

ARGTNVGRECCLEYFKGAIPISRLTRWYKTSGECPKDAIVFVTVQGKSICSDPKDKR
VKKAVRYLQRTWKGGPQES

Conjugation

Biotin

GENE INFORMATION

Gene Name

CCL17 chemokine (C-C motif) ligand 17 [*Canis lupus familiaris*]

Official Symbol

CCL17

Synonyms

CCL17; chemokine (C-C motif) ligand 17; C-C motif chemokine 17; CC chemokine TARC; small-inducible cytokine A17; thymus and activation-regulated chemokine; TARC;

Gene ID

403586

mRNA Refseq

NM_001003051

Protein Refseq

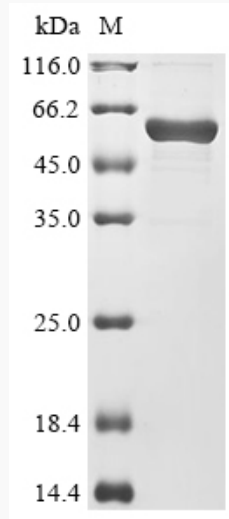
NP_001003051

Tel: 1-631-559-9269 1-516-512-3133

Email: info@creative-biomart.com Fax: 1-631-938-8127

45-1 Ramsey Road, Shirley, NY 11967, USA

SDS-PAGE



 Tel: 1-631-559-9269 1-516-512-3133

 Email: info@creative-biomart.com  Fax: 1-631-938-8127

 45-1 Ramsey Road, Shirley, NY 11967, USA