

## Recombinant Human CCL18 protein

Cat. No. CCL18-02H Lot. No. (See product label)

### SPECIFICATION

<b>Product Overview</b>	Recombinant Human CCL18 protein was expressed in Escherichia coli.
<b>Species</b>	Human
<b>Source</b>	E.coli
<b>ProteinLength</b>	69
<b>Description</b>	Human CCL18 is encoded by the CCL18 gene located on the chromosome 17. As also named MIP-4, it shares 61 % sequence identity to human MIP-1α. CCL18 is mainly expressed by lung and some lymphoid tissues like lymph nodes express CCL18 at low level. It is chemotactic for both activated (CD3+) T cells and nonactivated (CD14-) lymphocytes, but not for monocytes or granulocytes. Involved in B-cell migration into B-cell follicles in lymph nodes. CCL18 plays a role in both humoral and cell-mediated immunity responses.
<b>Form</b>	Lyophilized from a 0.2µm filtered concentrated solution in 20 mM PB, pH 7.4, 100 mM NaCl.
<b>Bio-activity</b>	Fully biologically active when compared to standard. The biological activity determined by a chemotaxis bioassay using human T-lymphocytes is in a concentration of 1.0-10 ng/ml.
<b>Molecular Mass</b>	Approximately 7.9 kDa, a single non-glycosylated polypeptide chain containing 69 amino acids.

 Tel: 1-631-559-9269 1-516-512-3133

 Email: [info@creative-biomart.com](mailto:info@creative-biomart.com)  Fax: 1-631-938-8127

 45-1 Ramsey Road, Shirley, NY 11967, USA

<b>AA Sequence</b>	AQVGTNKELCCLVYTSWQIPQKFIVDYSETSPQC PKPGVILLTKRGRQICADPNKKW VQKYISDLKLNA
<b>Endotoxin</b>	Less than 1 EU/μg of rHuMIP-4/CCL18 as determined by LAL method.
<b>Purity</b>	>97% by SDS-PAGE and HPLC analysis.
<b>Storage</b>	Use a manual defrost freezer and avoid repeated freeze-thaw cycles. 12 months from date of receipt, -20 to -70 centigrade as supplied. 1 month, 2 to 8 centigrade under sterile conditions after reconstitution. 3 months, -20 to -70 centigrade under sterile conditions after reconstitution.
<b>Reconstitution</b>	We recommend that this vial be briefly centrifuged prior to opening to bring the contents to the bottom. Reconstitute in sterile distilled water or aqueous buffer containing 0.1 % BSA to a concentration of 0.1-1.0 mg/mL. Stock solutions should be apportioned into working aliquots and stored at ≤-20 centigrade. Further dilutions should be made in appropriate buffered solutions.

## GENE INFORMATION

<b>Gene Name</b>	<b>CCL18</b>
<b>Official Symbol</b>	<b>CCL18</b>
<b>Synonyms</b>	CCL18; chemokine (C-C motif) ligand 18 (pulmonary and activation-regulated); SCYA18, small inducible cytokine subfamily A (Cys Cys), member 18, pulmonary and activation regulated; C-C motif chemokine 18; AMAC 1; CKb7; DC CK1; DCCK1; MIP 4; PARC; CC chemokine PARC; CC chemokine ligand 18; chemokine (C-C), dendritic; dendritic cell chemokine 1; small inducible cytokine A18; small-inducible cytokine A18; macrophage inflammatory protein 4; pulmonary and activation-regulated chemokine; alternative macrophage activation-associated CC chemokine 1;

 Tel: 1-631-559-9269 1-516-512-3133

 Email: [info@creative-biomart.com](mailto:info@creative-biomart.com)  Fax: 1-631-938-8127

 45-1 Ramsey Road, Shirley, NY 11967, USA

small inducible cytokine subfamily A (Cys-Cys), member 18, pulmonary and activation-regulated; AMAC1; MIP-4; AMAC-1; DC-CK1; SCYA18;

**Gene ID** 6362

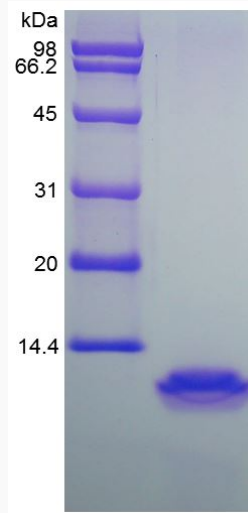
**mRNA Refseq** NM\_002988

**Protein Refseq** NP\_002979

**MIM** 603757

**UniProt ID** P55774

**SDS-PAGE of  
CCL18-02H**



 Tel: 1-631-559-9269 1-516-512-3133

 Email: [info@creative-biomart.com](mailto:info@creative-biomart.com)  Fax: 1-631-938-8127

 45-1 Ramsey Road, Shirley, NY 11967, USA