

Recombinant Full Length Human CCL18 Protein, C-Flag-tagged

Cat. No. CCL18-1270HFL Lot. No. (See product label)

SPECIFICATION

Product Overview	Recombinant Full Length Human CCL18 Protein, fused to Flag-tag at C-terminus, was expressed in Mammalian cells.
Species	Human
Source	Mammalian Cells
Description	This antimicrobial gene is one of several Cys-Cys (CC) cytokine genes clustered on the q arm of chromosome 17. Cytokines are a family of secreted proteins involved in immunoregulatory and inflammatory processes. The CC cytokines are proteins characterized by two adjacent cysteines. The cytokine encoded by this gene displays chemotactic activity for naive T cells, CD4+ and CD8+ T cells and nonactivated lymphocytes, but not for monocytes or granulocytes. This chemokine attracts naive T lymphocytes toward dendritic cells and activated macrophages in lymph nodes. It may play a role in both humoral and cell-mediated immunity responses.
Form	25 mM Tris HCl, pH 7.3, 100 mM glycine, 10% glycerol.
Molecular Mass	9.7 kDa
AA Sequence	MKGLAAALLVLVCTMALCSCAQVGTNKELCCLVYTSWQIPQKFIVDYSETSPQC PKP GVILLTKRGRQICADPNKKWVQKYISDLKLNATRTRPLEQKLISEEDLAANDILDYKDD DDKV

 Tel: 1-631-559-9269 1-516-512-3133

 Email: info@creative-biomart.com  Fax: 1-631-938-8127

 45-1 Ramsey Road, Shirley, NY 11967, USA

Purity	> 80% as determined by SDS-PAGE and Coomassie blue staining.
Stability	Stable for 12 months from the date of receipt of the product under proper storage and handling conditions. Avoid repeated freeze-thaw cycles.
Storage	Store at -80 centigrade.
Concentration	>50 ug/mL as determined by microplate BCA method.
Preparation	Recombinant protein was captured through anti-DDK affinity column followed by conventional chromatography steps.
Protein Families	Druggable Genome, Secreted Protein
Protein Pathways	Chemokine signaling pathway, Cytokine-cytokine receptor interaction
Full Length	Full L.

GENE INFORMATION

Gene Name	CCL18 C-C motif chemokine ligand 18 [Homo sapiens (human)]
Official Symbol	CCL18
Synonyms	CKb7; PARC; AMAC1; DCCK1; MIP-4; AMAC-1; DC-CK1; SCYA18
Gene ID	6362
mRNA Refseq	NM_002988.4
Protein Refseq	NP_002979.1

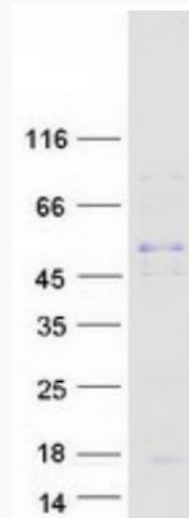
 Tel: 1-631-559-9269 1-516-512-3133

 Email: info@creative-biomart.com  Fax: 1-631-938-8127

 45-1 Ramsey Road, Shirley, NY 11967, USA

MIM 603757

UniProt ID P55774



Coomassie blue staining of purified CCL18 protein.

 Tel: 1-631-559-9269 1-516-512-3133

 Email: info@creative-biomart.com  Fax: 1-631-938-8127

 45-1 Ramsey Road, Shirley, NY 11967, USA