

Recombinant Human CCL18 protein, rFc-tagged

Cat. No. CCL18-3699H Lot. No. (See product label)

SPECIFICATION

Product Overview	Recombinant Human CCL18 protein(P55774)(Ala21-Ala89), fused with N-terminal rFc tag, was expressed in HEK293.
Species	Human
Source	HEK293
Form	Lyophilized from 0.22 µm filtered solution in PBS, pH 7.4. Normally 5% trehalose and 5% mannitol are added as protectants before lyophilization.
Molecular Mass	35.0 kDa
Endotoxin	<0.1 EU/µg protein, LAL method
Purity	>90 %, SDS-PAGE
Storage	It is recommended that the protein be aliquoted for optimal storage. Avoid repeated freeze-thaw cycles. Until expiry date, -20°C to -80°C as lyophilized proteins. 3 months, -20°C to -80°C under sterile conditions after reconstitution.
Reconstitution	Briefly centrifuge the tube before opening. Reconstitute at 0.1-0.5 mg/mL in sterile water.

GENE INFORMATION

 Tel: 1-631-559-9269 1-516-512-3133

 Email: info@creative-biomart.com  Fax: 1-631-938-8127

 45-1 Ramsey Road, Shirley, NY 11967, USA

Gene Name	CCL18 chemokine (C-C motif) ligand 18 (pulmonary and activation-regulated) [Homo sapiens]
Official Symbol	CCL18
Synonyms	CCL18; chemokine (C-C motif) ligand 18 (pulmonary and activation-regulated); SCYA18, small inducible cytokine subfamily A (Cys Cys), member 18, pulmonary and activation regulated; C-C motif chemokine 18; AMAC 1; CKb7; DC CK1; DCCK1; MIP 4; PARC; CC chemokine PARC; CC chemokine ligand 18; chemokine (C-C), dendritic; dendritic cell chemokine 1; small inducible cytokine A18; small-inducible cytokine A18; macrophage inflammatory protein 4; pulmonary and activation-regulated chemokine; alternative macrophage activation-associated CC chemokine 1; small inducible cytokine subfamily A (Cys-Cys), member 18, pulmonary and activation-regulated; AMAC1; MIP-4; AMAC-1; DC-CK1; SCYA18;
Gene ID	6362
mRNA Refseq	NM_002988
Protein Refseq	NP_002979
MIM	603757
UniProt ID	P55774

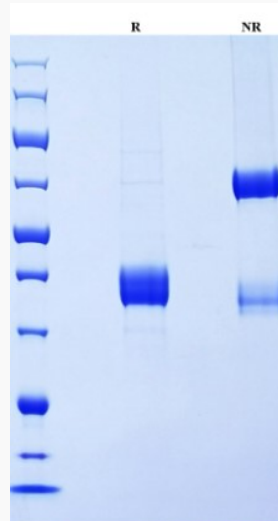
 Tel: 1-631-559-9269 1-516-512-3133

 Email: info@creative-biomart.com  Fax: 1-631-938-8127

 45-1 Ramsey Road, Shirley, NY 11967, USA



SDS-PAGE



Tel: 1-631-559-9269 1-516-512-3133

Email: info@creative-biomart.com Fax: 1-631-938-8127

45-1 Ramsey Road, Shirley, NY 11967, USA